

FUZZYSCAN PF680BT

1D Cordless Imager



A wireless, pocket-size imager for mobile scanning applications

The result of Cino's progressive engineering, PF680BT combines outstanding portability with the wireless edge afforded by Bluetooth. Small in size, this imager can be easily carried for scanning work that demands mobility. When paired with the smart cradle, PF680BT provides a cordless working range up to 100 meters. Moreover, its rugged housing offers superior protection against unintentional drops.

- Pocket-size and easy to carry
- IP65 level protection against dust and water
- Integrated with the latest Bluetooth wireless technology
- Up to 100m of communication coverage while working with Smart Cradle
- Works with most Android, iOS and Windows mobile devices
- One-step quick pairing with a scan or a tap
- Batch Scanning for simple stocktaking
- Supports PDF417 and Composite Codes
- Antimicrobial model available for healthcare applications
- Withstands drops from 2m to concrete
- Built-in vibration function for tactile confirmations
- Configuration can be done through iCode
- Advanced data formatting with DataWizard
- System security development using DataWizard

Ultimate Reliability and Mobility

A rock-solid build sets the PF680BT apart from other commercial grade companion scanners. Integrated with Bluetooth wireless technology, it offers the convenience of cordless operations. The PF680BT changes the way you work with more agility and productivity.

Class-leading Reliability

Engineered with over-mold construction and an IP65 rating, the PF680BT is not only water-dust-proof, but can also withstand multiple drops from 2 meters onto concrete surfaces. It can work in extreme temperature conditions from -20°C to 50°C. The high reliability allows you to get a great return on investment and a lower total cost of ownership.

Go wherever You Go

Small and compact, the PF680BT is built with portability in mind. It can easily fit into a pocket, or be carried around the neck or wrist using a lanyard for instant access.

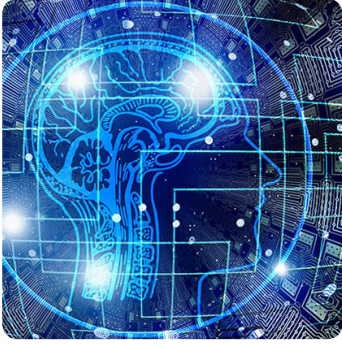
Comprehensive Connectivity

Broad Compatibility

Through the HID or SPP profile, the PF680BT is compatible with a wide range of Android and iOS mobile devices as well as the most popular Bluetooth-enabled Windows, MAC, and Linux hosts.

Instant Cordless Migration

No Bluetooth? Not a problem! Pair your PF680BT with Cino's Smart Cradle or Smart Dongle to instantly overcome the lack of Bluetooth connectivity. Without any additional costs, this instant "Plug-and-Play" cordless migration provides you with a working range of up to 100 meters.



Exclusive FuzzyScan Imaging Technology

Easy and Quick Pairing

To pair with Cino's cordless scanner is a breeze with the "scan to pair" or "tap to pair" functionalities. The user just needs to scan a "quick pair barcode" generated by ConnectWizard™, or scan the "Quick Pair Barcode" on the smart cradle. Cino's companion scanners can also pair with any NFC-enabled devices with a quick tap. This one-step pairing process streamlines user's workflows.

Scan All Your Needs

Powered by exclusive FuzzyScan Imaging technology, the PF680BT imager is capable of reading a vast array of challenging and problematic barcodes. The PF680BT imager is capable of scanning wrinkled, dirty, or soiled barcodes that are displayed on paper, plastic, metal, digital screens, and curved surfaces.

Cutting-edge Imaging Technology

Powered by state-of-the-art AI-based machine vision, the exclusive FuzzyScan imaging technology is a performance-driven innovation. Incorporated with an advanced optical design and a powerful hardware platform, all Cino scanners deliver unrivaled scanning speed and accuracy across all types of real-world barcodes.

Reads PDF417, GS1, and UDI Barcodes

The PF680BT series can capture regular barcodes from a long distance, as well as very high-density barcodes within an optimal depth of field. In addition to a vast array of linear barcodes, the PF680BT supports linear-stacked, PDF417, composite, GS1, and UDI codes.

Extensive Functionalities

The advantages of the PF680BT go beyond the maximum mobility delivered via Bluetooth technology. Powered by more practical functions, the FuzzyScan PF680BT scanner enables you to complete various business tasks and maximize productivity.

"On the Spot" Data Transmissions

"Online Scanning" usually sends data to hosts immediately after each scan. However, if the "Out-of-range-scanning" function is enabled, the scanner can continue to scan and retain up to 5,000 EAN barcodes when it loses the Bluetooth connection. Once back into radio range, it will automatically reconnect and transmit all stored data to the host.

Inventory Counts Made Simple

"Batch Scanning" is ideal and useful for simple stocktaking. When you use this function, all scanned data will be stored into the scanner's flash memory. Once data transmission is activated, all stored data will be sent to the host as a batch. The PF680BT scanner can store a maximum of 100,000 EAN barcodes per batch. Moreover, you can add a quantity value following each scanned data.

Verifying Data Uniformity Made Easy

"Validation Scanning" enables the PF680BT scanner to compare scanned data against the stored master data to verify data uniformity. This function is useful if data verification is needed during "shipping and receiving" or "order picking".



FUZZYSCAN DNA

Streamline Your Workflow via Function Keys

The PF680BT is equipped with one big trigger button and four function buttons. These four function keys allow users to switch between different functions easily; increasing efficiency and productivity.

Enhanced User Experiences

Designed with sharp aiming and multifaceted notification feedback via visual, audio, as well as tactile indications, the PF680BT delivers superior usability and a great user experience.

Clear Audio and Visual Feedback

The PF680BT uses audio and visual indicators to indicate its various statuses. The scanner has a loud beeper with an adjustable volume and tone. The LED lights emit conspicuous and programmable multi-color signals to help users clearly identify the current status at a quick glance.

Tactile Feedback

Beeping sounds are considered disruptive in certain circumstances. Vibration is available on this scanner to provide tactile feedback to users. This is suitable for both quiet and noisy environments.

Value Beyond Measure

FuzzyScan DNA is a collection of unique features that come with every Cino imagers at no additional cost. It delivers exceptional value beyond barcode scanning. Aside from the exclusive FuzzyScan imaging technology, Cino's scanners provide the following distinctive features to elevate user's experience:

DataWizard

DataWizard is a unique feature to perform advanced data formatting and complex data processing.

iCode

The iCode feature is a macro command barcode that allows one-step configuration with a single scan.

Multilingual Edge

Multilingual Edge is a useful feature that enables data output in your desired language.

Smart Scene

Smart Scene offers a choice of several preset configurations for various application scenarios to achieve optimal scanning performance.

Security Plus

Security Plus is a user-defined security mechanism that prevents the access of unauthorized barcode scanners.

FuzzyScan Enabling Solution

FuzzyScan Enabling Solution is a suite of software utilities that enables easy integration, management, and deployment of scanners.

SPECIFICATIONS

Performance Characteristics

Optical System	High performance linear imaging engine
Print Contrast	20% minimum reflective difference
Light Source	630nm LED
Minimum Resolution	3 mil (Code 39, PCS 0.9)
Reading Range *1	13 mil (0.33mm) UPC/EAN up to 24"
Scan Rate	Dynamic scanning rate up to 500 scans per second
Pitch / Skew / Tilt	±65° / ± 65° / ± 55°
Configuration Setup	FuzzyScan Barcode commands FuzzyScan iCode FuzzyScan PowerTool
Data Processing	DataWizard
User Interfaces	4 function keys, one scan button 3 LEDs for power, link and status indication Programmable beeper Vibration function

Electrical Characteristics

Battery	3.7V, 1,150mAh Li-ion rechargeable battery
Battery Charge Time	Approx. 3-4 hours charge time over PSU
Scans per full Charge	More than 54,000 scans and transmissions
Operating Voltage	5VDC ± 10%

Communication Characteristics

RF Standard	Bluetooth Version 4.x
RF Frequency Band	2.402 ~ 2.4830 GHz unlicensed ISM band
Radio Link Modes	PAIR, PICO, SPP, HID
Communication Range	Up to 100 meters in open space when working with Smart Cradle, line of sight
Supported Profiles	HID (Keyboard), SPP (Serial Port)

Physical Characteristics

Dimensions	119.0 mm (L) x 49.0 mm (W) x 24/38 mm (D)
Weight	135g (Battery included)
Color	Coffee Black, Ivory White

1. The Reading Range are measured under Cino's test environmental condition.
2. Codablock F is available upon request.
3. Don't stare into the LED beam.

Supported Symbolologies

1D Linear Codes	Code 39, Code 39 Full ASCII, Code 32, Code 39 Trioptic Code 128, GS1-128, Codabar, Code 11, Code 93 Standard & Industrial 2 of 5, Interleaved & Matrix 2 of 5 German Postal Code, China Postal Code, IATA UPC/EAN/JAN, UPC/EAN/JAN with Addendum Telepen, MSI/Plessey & UK/Plessey GS1 DataBar (formerly RSS) Linear & Linear Stacked.
Linear-stacked*2	PDF417, Micro PDF417, Composite Codes, Codablock F
Postal Barcodes	German Post, Korean Post, China Post

User Environment

Drop Specifications	Withstands multiple drops from 2.0m (6.6ft) to concrete
Environmental Sealing	IP65
Operating Temperature	-20 °C to 50 °C (-4 °F to 122 °F)
Storage Temperature	-40 °C to 70 °C (-40 °F to 158 °F)
Humidity	0% to 95% relative humidity, non-condensing
Ambient Light Immunity	0-106,000 lux

Safety & Regulatory

EMC & Radio	CE, UKCA, FCC, BSMI, RCM, KC, NCC, VCCI, MIC, SRRC
Safety *3	LED Eye Safety IEC62471, Exempt Group
Environmental	Compliant with RoHS III and REACH

Accessories

Smart Cradle RF Standard Host Interface	HB3112 Smart Cradle Bluetooth Version 4.x USB HID (USB Keyboard) USB VCOM (USB COM port emulation) USB OEM POS Standard RS232
Charging Cradle Host Interface	HB3110 Charging Cradle USB
Cables	RS232 Serial Cable USB-A Cable USB-C Cable USB Power Cable Micro USB Cable
Others	Power Supply Unit (5VDC, 2A outlet) BT3100 Battery Pack (1,150mAh) BT3200 Battery Pack (2,300mAh) Landyard

