

FUZZYSCAN PA680BT HC

2D Healthcare Companion Scanner



An antibacterial 2D companion scanner for healthcare and hygiene-sensitive applications

Powered by Cino's exclusive FuzzyScan imaging technology, the PA680BT HC not only can read most real-world challenging and problematic barcodes, but also features a comprehensive lineup to fulfill various scanning needs. Incorporating broad Bluetooth connectivity and an antimicrobial yet rugged enclosure, the PA680BT HC provides users with a reliable cordless solution to fulfill diverse healthcare scanning demands. Moreover, the versatile functionality and FuzzyScan DNA make PA680BT HC an ultimate solution to meet the stringent requirements of hygiene-sensitive applications.

Anti-microbial housing

Complies with JIS Z2801 : 2000 and ISO22196 antimicrobial standards

One-step quick pairing with a scan or a tap

Options of Standard-range and High-density models

IP65 rating and 2m (6.6ft.) drop resistance

A wide working range from -20°C to 50°C

Compatible with most popular Android and iOS mobile devices

Works with Bluetooth-enabled Windows, MAC, and Linux hosts

Up to 100m of communication coverage with Smart Cradle

Batch Scanning for simple stocktaking application

Four programmable function keys streamline workflow

Built-in vibration function for tactile confirmations

Over 24 working hours per full charge

Inherits FuzzyScan DNA

Hygiene- First

With a disinfectant-ready enclosure incorporated with antimicrobial additives, the PA680BT HC series scanner is specifically designed for the healthcare industry and hygiene-sensitive applications.

Disinfectant-Ready Enclosure

The scanner features a disinfectant-ready enclosure that can be wiped down with Cino's recommended cleaning solutions. This helps maintain hygiene standards without causing any damage to the healthcare scanner.

Inclusion of Antimicrobial Additives

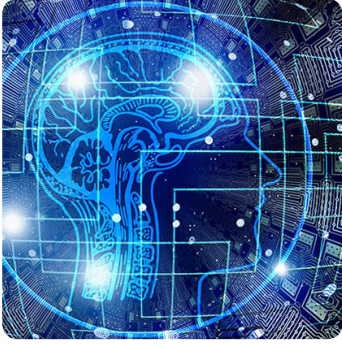
The housing's plastic material is embedded with silver inorganic antimicrobial additives that will not wear off during the scanner's lifetime. The antimicrobial additives have been lab tested to ensure that they inhibit the growth of microorganisms.

Compliance with International Antimicrobial Standards

The PA680BT HC scanner complies with the JIS Z2801:2000 and the ISO22196 antimicrobial standards. This ensures that you can use this healthcare scanner in hygiene-sensitive applications around the world.

Ultimate Reliability and Mobility

A rock-solid build sets the PA680BT HC apart from other commercial grade companion scanners. Integrated with Bluetooth wireless technology, it offers the convenience of cordless operations. The PA680BT HC changes the way you work with more agility and productivity.



Exclusive FuzzyScan Imaging Technology

Class-leading Reliability

Engineered with over-mold construction and an IP65 rating, the PA680BT HC is not only water-dust-proof, but can also withstand multiple drops from 2 meters onto concrete surfaces. It can work in extreme temperature conditions from -20°C to 50°C. The high reliability allows you to get a great return on investment and a lower total cost of ownership.

Go wherever you go

Small and compact, the PA680BT HC is built with portability in mind. It can easily fit into a pocket, or be carried around the neck or wrist using a lanyard for instant access.

Comprehensive Connectivity

Broad compatibility

Through the HID or SPP profile, the PA680BT HC is compatible with a wide range of Android and iOS mobile devices as well as the most popular Bluetooth-enabled Windows, MAC, and Linux hosts.

Instant cordless migration

No Bluetooth? Not a problem! Pair your PA680BT HC with Cino's Smart Cradle or Smart Dongle to instantly overcome the lack of Bluetooth connectivity. Without any additional costs, this instant "Plug-and-Play" cordless migration provides you with a working range of up to 100 meters.

Easy and Quick Pairing

To pair with Cino's cordless scanner is a breeze with the "scan to pair" or "tap to pair" functionalities. The user just needs to scan a "quick pair barcode" generated by ConnectWizard™, or scan the "Quick Pair Barcode" on the Smart Cradle. Cino's companion scanners can also pair with any NFC-enabled devices with a quick tap. This one-step pairing process streamlines user's workflows.

Scan All Your Needs

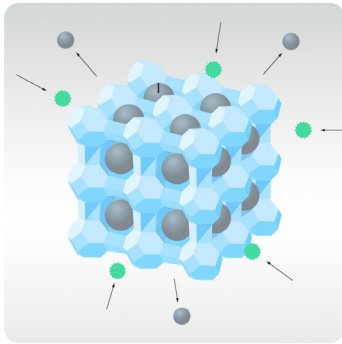
Powered by exclusive FuzzyScan Imaging technology, the PA680BT HC scanner is capable of reading a vast array of challenging and problematic barcodes. The PA680BT HC scanner is capable of scanning wrinkled, dirty, or soiled barcodes that are displayed on paper, plastic, metal, digital screens, and curved surfaces.

Cutting Edge Imaging Technology

Powered by state-of-the-art AI-based machine vision, the exclusive FuzzyScan imaging technology is a performance-driven innovation. Incorporated with an advanced optical design and a powerful hardware platform, all Cino scanners deliver unrivaled scanning speed and accuracy across all types of real-world barcodes.

A Complete Lineup

The PA680BT Standard-range model offers superior reading performance on both regular and problematic real-world barcodes, making it suitable for a wide range of applications. While the High-density model is purpose-built to read DPM, high density and very small 2D barcodes that appear on items such as electronic components, jewelry tags, and medical equipments. Two different models are available to ensure maximum suitability for different scanning needs.



**Inclusion of
antimicrobial agent**

Extensive Functionalities

The advantages of the PA680BT HC go beyond the maximum mobility delivered via Bluetooth technology. Powered by more practical functions, the FuzzyScan PA680BT HC scanner enables you to complete various business tasks and maximize productivity.

“On the Spot” Data Transmissions

“Online Scanning” usually sends data to hosts immediately after each scan. However, if the “Out-of-range-scanning” function is enabled, the scanner can continue to scan and retain up to 5,000 EAN barcodes when it loses the Bluetooth connection. Once back into radio range, it will automatically reconnect and transmit all stored data to the host.

Inventory Counts Made Simple

“Batch Scanning” is ideal and useful for simple stocktaking. When you use this function, all scanned data will be stored into the scanner’s flash memory. Once data transmission is activated, all stored data will be sent to the host as a batch. The PA680BT HC scanner can store a maximum of 100,000 EAN barcodes per batch. Moreover, you can add a quantity value following each scanned data.

Verifying Data Uniformity Made Easy

“Validation Scanning” enables the PA680BT HC scanner to compare scanned data against the stored master data to verify data uniformity. This function is useful if data verification is needed during “shipping and receiving” or “order picking”.

Streamline your workflow via function keys

The PA680BT HC is equipped with one big trigger button and four function buttons. These four function keys allow users to switch between different functions easily; increasing efficiency and productivity.

Enhanced User Experiences

Designed with sharp aiming and multifaceted notification feedback via visual, audio, as well as tactile indications, the PA680BT HC delivers superior usability and a great user experience.

Clear Audio and Visual Feedback

The PA680BT HC uses audio and visual indicators to indicate its various statuses. The scanner has a loud beeper with an adjustable volume and tone. The LED lights emit conspicuous and programmable multi-color signals to help users clearly identify the current status at a quick glance.

Tactile Feedback

Beeping sounds are considered disruptive in certain circumstances. Vibration is available on this scanner to provide tactile feedback to users. This is suitable for both quiet and noisy environments.



FUZZYSCAN DNA

Value Beyond Measure

FuzzyScan DNA is a collection of useful features with added-values available for every Cino imager at no additional cost. These exclusive features not only elevate your user experience, but also help you overcome various technical limitations beyond barcode scanning.

DataWizard

A powerful feature that allows advanced formatting on GS1 and UDI data. By using data scripts, it is able to perform sophisticated data validation and complex data processing, such as US driver's license or medical data parsing

iCode

A useful macro command barcode for enabling configuration with a single scan

iTune

A one-step smart-tuning function for optimization of readability

Multilingual Edge

A comprehensive function for converting data output into your desired languages

Smart Scene

A series of preset configurations for easy adaptation to specific scenarios

Security Plus

A programmable security script for preventing unauthorized access

FuzzyScan Enabling Solution

A suite of software utilities and SDK that enables easy integration, management, and deployment of scanners

SPECIFICATIONS

Performance Characteristics

Image Sensor	1280 x 800 Pixels
Print Contrast	15% minimum reflectance difference
Light Source	660nm LED
Imager Field of View	41.5 ° H x 25.9 ° V
Minimum Resolution	HD Model 2.4 mil Code 39 4.5 mil DM SR Model 2.7 mil Code 39 4.8 mil DM
Motion Tolerance *1	Up to 617 cm/s (243 in/s)
Reading Range *2	HD Model 13 mil (0.33mm) UPC/EAN up to 14.5" SR Model 13 mil (0.33mm) UPC/EAN up to 24.4"
Roll, Pitch, Skew	Roll: 360 ° ; Pitch: ± 75 ° ; Skew: ± 65 °
User Interfaces	4 function keys, one scan button LEDs for power, link and status indication Adjustable beeper Vibration function
Configuration Setup	FuzzyScan Barcode commands FuzzyScan iCode FuzzyScan PowerTool
Data Processing	DataWizard
Image Capture	Graphic format: BMP

Electrical Characteristics

Standard Battery	3.7V, 1,150mAh Li-ion rechargeable battery
Battery Charge Time	Approx. 3-4 hours charge time over PSU
Scans per full Charge	More than 20,000 scans and transmissions
Operating Voltage	5 ± 10% VDC
Operating Current	Scanner with Smart Cradle Charging: Maximum 870 mA Standby: Maximum 190 mA

Communication Characteristics

RF Standard	Bluetooth Version 4.x
RF Frequency Band	2.402~2.4830 GHz unlicensed ISM band
Radio Link Modes	PAIR, PICO, SPP, HID
Communication Range	Up to 100 meters in open space when working with Smart Cradle, line of sight
Supported Profiles	HID (Keyboard), SPP (Serial Port)

1. Measured under factory preset test condition.
2. The Reading Range are measured under Cino's test environmental condition.
For more details, please refer to Scan Map.
3. Codablock F, Code 49, Han Xin Code, and DotCode are available upon request.
4. MICR-E13B and US Currency are available upon request.
5. Don't stare into the LED beam.

Supported Symbolologies

1D Linear Codes	Code 39, Code 39 Full ASCII, Code 32, Code 128, GS1-128, Codabar, Code 11, Code 93, GS1 DataBar, Standard & Industrial 2 of 5, Interleaved & Matrix 2 of 5, IATA, UPC/EAN/JAN, UPC/EAN/JAN with Addendum, Telepen, MSI/Plessey & UK/Plessey
2D Codes *3	PDF417, Micro PDF417, Composite Codes, DataMatrix, MaxiCode, QR Code, MicroQR, Aztec, Codablock F, Code 16K, Code 49, Chinese Sensible (Han Xin) Code
Postal Codes	Australian Post, US Planet, US POSTNET, Japan Post, Posi LAPA 4 State Code, German Post, British Post, Intelligent Mail, Korean Post, Dutch KIX Post, China Post
OCR *4	OCR A/B, MICR-E13B, US Currency

User Environment

Drop Specifications	Withstands multiple drops from 2.0m (6.6ft) to concrete
Environmental Sealing	IP65
Operating Temperature	-20 °C to 50 °C (-4 °F to 122 °F)
Storage Temperature	-40 °C to 70 °C (-40 °F to 158 °F)
Humidity	0% to 95% relative humidity, non-condensing
Ambient Light Immunity	0 ~ 106,000 lux
ESD Protection	Functional after ±20KV direct air discharge
Recommended Cleaning Solutions	Refer to the User Manual for the complete list of approved cleaners

Safety & Regulatory

EMC & Radio	CE, UKCA, FCC, BSMI, RCM, KC, NCC, VCCI, MIC, SRRC
Safety *5	LED Eye Safety IEC62471, Exempt Group
Environmental	Compliant with RoHS and REACH
Antimicrobial	JIS Z2801 : 2000, ISO22196

Physical Characteristics

Dimensions	119.0 mm (L) x 49.0 mm (W) x 24/38 mm (D)
Weight	135g (Battery included)
Color	Healthcare White
Antimicrobial Additives	Silver inorganic antimicrobial agent

Accessories

Smart Cradle RF Standard Host Interfaces	HB3112 Smart Cradle Bluetooth Version 4.x USB HID (USB Keyboard) USB VCOM (USB COM port emulation) USB OEM POS Standard RS232
Charging Cradle Host Interface	HB3110 Charging Cradle USB
Cables	RS232 Serial cable USB-A Cable USB-C Cable USB Power Cable Micro USB Cable
Others	Power Supply Unit (5VDC, 2A outlet) BT3100 Battery Pack (1,150mAh) BT3200 Battery Pack (2,300mAh) Landyard

