

FUZZYSCAN PA670BT

Rugged 2D Pocket Scanner



Rugged 2D pocket scanner for cordless applications

Small and durable, the PA670BT blends portability with the cordless advantage afforded by Bluetooth. This 2D barcode scanner fits easily inside a pocket, but can also be carried with a lanyard for quick access. Its over-mold enclosure offers IP65-level protection, and is built to withstand 2-meter falls onto concrete. The PA670BT is ideal for barcode scanning applications that require unrestricted mobility.

- Pocket-size and easy to carry
- IP65 level protection against dust and water
- Wireless range of up to 100m with smart cradle or dongle
- Works with various Android and iOS devices
- Batch Scanning for simple stocktaking
- Reads most challenging and problematic barcodes
- Reads electronic barcodes from digital screens
- Withstands 2-meter drops onto concrete
- Optional vibrator for tactile confirmations
- Supports multilingual data output
- Single scan configuration with the iCode
- Advanced data processing with DataWizard Premium
- Cost-free security with Security Plus

Scan All Your Needs

Ready for challenges

Empowered by the FuzzyScan imaging platform, the PA670BT captures a vast array of problematic barcodes that are encountered in practice. For example: distorted, low contrast, dirty or damaged barcode labels, and electronic coupons on digital screens with poor lighting.

Different solutions for different needs

The PA670BT Standard-Range model is designed to fulfill the vast majority of retail scanning requirements. It offers swift readings on both regular and high-density barcodes, making it an excellent choice for general applications. To help you capture those very high-density 2D barcodes that appear on jewelry tags or electronic components, Cino offers a specialized High-Density model.

Go wherever you need to be

The ultimate in portability

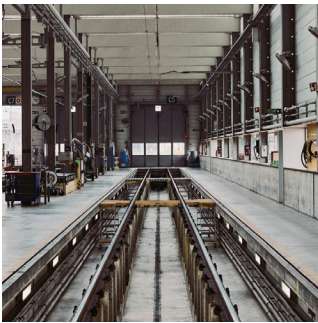
Small and compact, the FuzzyScan PA670BT is built with portability in mind. It can easily fit into a pocket, or be carried around the neck or wrist with a lanyard for instant access.

Durable and ergonomic

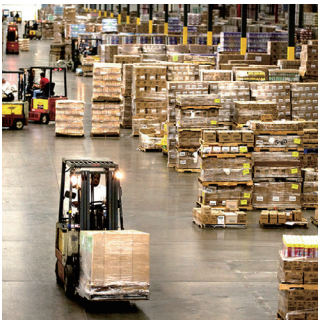
Thanks to its durable construction, this barcode scanner can withstand 2 meter drops onto concrete, while offering IP65-level protection against dust and water. Furthermore, it is ergonomically designed to yield a natural, comfortable grip all shift long.



Great Portability



Manufacturing



Warehousing



Distribution Center

Freedom of Cordless Scanning

Instant cordless migration

The PA670BT can be paired with Cino's smart cradle or smart dongle. These accessories offer a cordless working distance of up to 100 meters, and serve as instant wireless solutions for hosts that lack Bluetooth capabilities. Under PICO mode, the smart cradle and smart dongle can each support 7 scanners simultaneously, allowing users to centralize their data transmissions for better management.

Various connection possibilities

Furthermore, the PA670BT is also compatible with a wide range of Bluetooth-enabled hosts and operating systems. It can be easily paired with tablets or mobile phones running Windows, Linux, Android, or iOS through various link modes. The scanner can also be connected to different host interfaces, such as USB or RS232.

Comprehensive Functionalities

Real-time data transmissions

Under Online Scanning mode, the PA670BT will send captured data to its host device immediately after each scan. If the Out-of-range scanning function is enabled, up to 5,000 scans of EAN barcodes can be retained in your scanner when radio connection with the host device is lost.

Efficient stocktaking via Batch Scanning

Batch Scanning mode can be selected for simple inventory work. Barcode data is held in memory after each scan, and will be sent as a batch when transmission is activated. 100,000 scans of EAN barcode can be stored. Quantity value and time-stamp may be added to data immediately following capture.

Data validation made easy with Validation Scanning

Validation Scanning mode enables the scanner to record master data, and compare it against information that is subsequently captured. Should they not be a match, warning beeps will be emitted. This mode is useful for data validation tasks, such as shipping & receiving, and order picking.

Power that lasts

The PA670BT integrates an advanced power management system which maximizes the number of scans per charge. A full charge may be sufficient for a whole day's work or more. Battery status can be obtained simply by scanning the relevant command barcode. These features will help you focus on the tasks at hand, instead of the next recharge.

Enhanced User Experience

Sharp aiming

The PA670BT's sharp LED beam helps user aim with greater speed and accuracy.

Clear feedback

Its loud beeper and multicolor LED lights are designed to provide clear status information.

Optional vibrator

An optional vibrator is available to deliver tactile confirmations when such silent signals are preferred.



Retail

Value Beyond Measure

DataWizard Premium, advanced data processing

DataWizard Premium is a unique feature designed for FuzzyScan barcode scanners, enabling them to perform advanced data formatting and complex data processing. Costly or time-consuming changes to your host application can thereby be avoided. Beeping and LED indications can also be programmed through DataWizard Premium.

iCode, single scan setup

The iCode is a macro command barcode designed to streamline your setup process. Instead of scanning multiple command barcodes to configure their devices, users can easily generate a single iCode that contains all of the relevant parameters. Your entire setup can thus be completed with one quick scan. This simplified procedure lowers the risk of configuration errors, accelerates deployments, and reduces field service expenses.

Multilingual Edge, no more language barriers

With Cino's Multilingual Edge, FuzzyScan 2D scanners can be configured to output multiple languages, including Arabic, German, Greek, Russian, Turkish, etc. They can also be set to transmit Asian languages such as simplified Chinese, traditional Chinese, Japanese and Korean. The Multilingual Edge feature enables users to communicate without linguistic barriers, expanding business horizons.

Smart Scenes, easily adapt to diverse applications

The Smart Scenes feature minimizes configuration efforts by allowing you to choose from an assortment of settings tailored to particular scenarios. Simply pick the scene option that best suits your needs, and start scanning! Smart Scenes empowers you to attain exceptional scanning results with minimal efforts.

Security Plus, cost-free business protection

Security Plus guards your host application by restricting its access to authorized FuzzyScan barcode scanners only. Thanks to this security mechanism, developers can set their host applications to work exclusively with scanners containing an algorithm that they have pre-defined. Scanners lacking that customized algorithm will be denied access. Security Plus is available free of charge, delivering an easy and secure solution that protects businesses at no extra cost.

SPECIFICATIONS

Performance Characteristics

Scan Pattern	Area Image
Print Contrast	20% minimum reflectance difference
Light Source	Aiming Pattern : 630nm LED Illumination : 630nm LED
Min. Resolution	SR Model 3.3 mil Code 39 7 mil DM HD Model 2.7 mil Code 39 5 mil DM
Reading Range ¹	SR Model 5 mil (0.13mm) C39 4~15 cm (1.5"~5.9") 13 mil (0.33mm) UPC/EAN 3~38 cm (1.1"~15.0") 10 mil (0.25mm) DM 3~15.5 cm (1.1"~6.1") HD Model 3 mil (0.07mm) C39 3~8 cm (1.1"~3.1") 5 mil (0.13mm) C39 3~11 cm (1.1"~4.3") 13 mil (0.33mm) UPC/EAN 2.5~16.5 cm (0.9"~6.4") 5 mil (0.13mm) DM 3.5~9 cm (1.3"~3.5") 10 mil (0.25mm) QR 3.5~8 cm (1.3"~3.1")
Roll, Pitch, Skew	Roll: 360°; Pitch: ± 75°; Skew: ± 65°
User Interface	4 function keys, one scan button LEDs for power, link and status indication Adjustable beeper Optional vibrator
Data Processing	DataWizard Premium
Image Capture	Graphic Format: BMP

Electrical Characteristics

Battery	Standard	3.7V, 1150mAh Li-ion rechargeable battery
	Optional	3.7V, 2300mAh Li-ion rechargeable battery
Battery Charge Time		Approx. 3-4 hours per full charge (Standard Battery)

Communication Characteristics

RF Standard	Bluetooth v4.0
RF Frequency Band	2.402~2.4830 GHz unlicensed ISM band
Radio Link Modes	PAIR, PICO, SPP, HID
Communication Range	Up to 100m in open space with Smart Cradle or Smart Dongle, line of sight
Supported Profiles	SPP, HID
Supported Mobile OS	iOS (HID), Android (SPP & HID)

Physical Characteristics

Dimensions	119.0 mm (L) x 49.0 mm (W) x 24/38 mm (D)
Weight	135g (Battery included)

Supported Symbolologies

1D Linear Codes	Code 39, Code 39 Full ASCII, Code 32, Code 128, GS1-128, Codabar, Code 11, Code 93, Standard & Industrial 2 of 5, Interleaved & Matrix 2 of 5, IATA, UPC/EAN/JAN, UPC/EAN/JAN with Addendum, Telepen, MSI/Plessey & UK/Plessey, GS1 DataBar, Linear & Linear Stacked
2D Codes	PDF417, Micro PDF417, Codablock F, Code 16K, Code 49, Composite Codes, DataMatrix, MaxiCode, QR Code, MicroQR, Aztec
Postal Barcodes	Australian Post, US Planet, US Postnet, Japan Post, Dutch KIX Code, Intelligent Mail, British Post

User Environment

Drop Specifications	Withstands multiple drops from 2.0m (6.6ft) to concrete
Environmental Sealing	IP65
Operating Temperature	-10 °C to 50 °C (14 °F to 122 °F)
Storage Temperature	-40 °C to 70 °C (-40 °F to 158 °F)
Humidity	5% to 95% relative humidity, non-condensing
Ambient Light Immunity	0 ~ 100,000 lux

Safety & Regulatory

EMC & Radio	CE, FCC, BSMI, RCM, KC, NCC, VCCI, MIC
Safety ²	LED Eye Safety IEC62471, Exempt Group
Environmental	Compliant with RoHS directive

Accessories

Smart Cradle	
RF Standard	Bluetooth v4.0
Battery charging	Fast charge
User Interfaces	1 blue link indicator, 2-color status indicator Beeper, Paging / Reset button
Host Interfaces	PS/2(DOS V) Keyboard Wedge, TTL RS232 Serial, USB HID, USB COM
<hr/>	
Charging Cradle	
Battery charging	Fast charge
User interface	1 blue power indicator
Host interface	USB
<hr/>	
Interface Cables	PS/2(DOS V) Keyboard Wedge Cable RS232 Serial Cable USB Cable Micro USB Cable

1. Reading range is measured under Cino's test conditions.

2. Do NOT stare into the LED beam.