

## 1D Cordless Imager **FUZZYSCAN F680BT**



### A premium cordless linear imager for retail and commercial applications

Integrated with the exclusive FuzzyScan Imaging technology, the latest Bluetooth connectivity, and the readability of PDF417, GS1, UDI barcodes, the F680BT series cordless handheld imager delivers exceptional reading performance to fulfill various challenging scanning needs. In addition, broad wireless connectivity, the UltraCap™ battery-free solution, versatile features, and a compact, sturdy construction make this imager ideal for any demanding retail and commercial applications. The FuzzyScan F680BT series cordless handheld imager reinvents the concept of a linear imager.

- Instant cordless migration via Cino Smart Cradle
- Up to 100m of communication coverage while working with Cino Smart Cradle
- One-step & hassle-free pairing
- Supports PDF417, GS1, and UDI codes
- UltraCap™ Battery-Free solution supported
- Works with Bluetooth-enabled Windows, MAC, and Linux hosts
- Compatible with most popular Android and iOS mobile devices
- Batch Scanning for simple stocktaking
- Optional vibration function for tactile confirmations
- Compact, sturdy construction
- Withstands 1.8m drops to concrete
- Inherits the powerful FuzzyScan DNA

### Wireless Connectivity and Beyond

For Cino cordless imagers, superior performance is just the start. Comprehensive connectivity and one-step pairing will change the way you work by providing more agility, flexibility and productivity.

#### Instant Cordless Migration

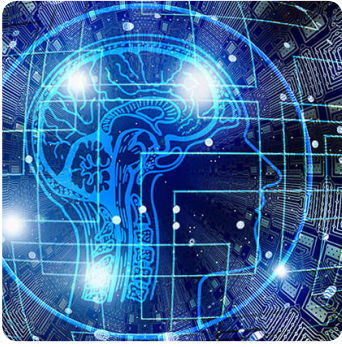
No Bluetooth? Not a problem! Pair your F680BT imager with Cino's Smart Cradle or Smart Dongle to instantly overcome the lack of Bluetooth connectivity. Without any additional costs, this instant "Plug-and-Play" cordless migration provides you with a working range of up to 100 meters.

#### Broad Connectivity

Through the HID or SPP profile, Cino cordless imagers can connect to the most popular Bluetooth-enabled Windows, MAC, and Linux hosts as well as Android and iOS mobile devices.

#### One-Step & Hassle-Free Pairing

Pairing Cino cordless imagers is a breeze - just "Scan to pair". Scan the "Quick Pair Barcode" on the smart cradle or smart dongle to instantly create a pairing with your F680BT. To pair the F680BT with your remote host, you can easily scan the on-screen "Quick Pair Barcode" generated by Cino ConnectWizard™ to simplify Bluetooth pairing process.



## Exclusive FuzzyScan Imaging Technology

### Scan All Your Needs

Powered by the exclusive FuzzyScan Imaging technology, the F680BT imager is capable of reading a vast array of challenging and problematic barcodes. Whether your barcodes are wrinkled, dirty, soiled or displayed on paper, plastic, metal, digital screens, or curved surfaces, your F680BT imager performs quick and accurate readings.

### Cutting Edge Imaging Technology

Powered by the state-of-the-art AI-based machine vision, the exclusive FuzzyScan imaging technology is a performance-driven innovation. Incorporated with advanced optics and powerful hardware platform, all Cino scanners deliver unrivalled scanning speed and accuracy across virtually any type of real-world barcodes.

### Read PDF417, GS1, and UDI Barcodes

The F680BT series can capture very high-density barcodes with optimal depth of field and regular barcodes from a long distance. In addition to a vast array of linear barcodes, it also supports linear-stacked, PDF417, composite, GS1 and UDI codes.

### Practical Functionalities

The advantages of Cino cordless imagers go beyond the ultimate mobility delivered via Bluetooth technology. Powered by more practical functions, the FuzzyScan F680BT imager enables you to complete various business tasks and maximize productivity.

#### “On the Spot” Data Transmissions

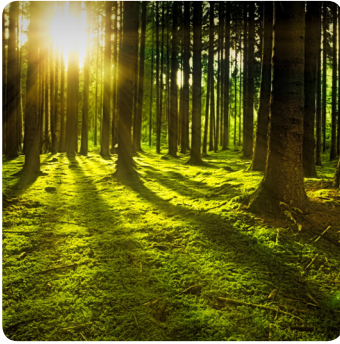
“Online Scanning” sends data to hosts immediately after each scan. If the “Out-of-range-scanning” function is enabled, the imager can continue to scan and retain up to 5,000 EAN barcodes when it loses the Bluetooth connection. Once back into radio range, it will automatically reconnect and transmit all stored data to the host.

#### Inventory Counts Made Simple

“Batch Scanning” is ideal and useful for simple stocktaking. When you use this function, all scanned data will be stored into the imager’s flash memory. Once data transmission is activated, all stored data will be sent to the host as a batch. The F680BT imager can store a maximum of 80,000 EAN barcodes per batch. Moreover, you can add a quantity value following each scanned data.

#### Verifying Data Uniformity Made Easy

“Validation Scanning” enables the F680BT imager to compare scanned data against the stored master data to verify data uniformity. This function is useful if data verification is needed during “shipping and receiving” or “order picking”.



## Battery-Free Solution

### UltraCap™ Battery-Free Solution

The Cino Battery-Free solution is powered by the UltraCap™ Capacitor. This alternative power source is purpose-built on the concerns of cost saving and environmental sustainability. The UltraCap™ Capacitor is ideal for applications requiring a very quick charge to fulfill short-to medium-term operations, such as retail, hospitality, healthcare, and so on.

#### Swappable & Interchangeable

The UltraCap™ features a swappable design. It is not only interchangeable with Cino's standard Li-ion battery, but also compatible with all FuzzyScan cordless handheld imagers.

#### Lower Total Cost of Ownership

In an UltraCap™'s lifespan, you would otherwise use more than 25 standard Li-ion batteries. Therefore, this battery-free solution not only significantly lowers your replacement costs of battery, but also minimizes your potential productivity losses caused by dead batteries.

#### Extended Working Time

The UltraCap™ provides the longest working time by far compared to its competition. With a capacity of 750 Farads, the largest in its class, each full charge is able to support more than **17,500 scans**. Even under intensive use, this is enough to last for at least one hour.

#### Quick Get-Up-And-Go

Out of power? No worries. Every 1-minute quick charge is able to support **700 scans**. Compared to the standard Li-ion battery, this feature maximizes uptime and allows you to complete short-term scanning operations in a timely fashion.

#### Eco-Friendly for a Healthier Planet

Thanks to the long lifespan of UltraCap™, it helps to reduce lots of e-waste while also exemplifying ESG consciousness and environmental sustainability in the business world.

### Enhanced User Experiences

Designed with a sharp aiming and multifaceted notification feedback via visual, audio as well as tactile indications, the F680BT delivers superior usability and great user experience.

#### Clear Audio and Visual Feedback

The F680BT imager uses audio and visual indicators to indicate its various statuses. The imager has a loud beeper that allows you to adjust volume and tone, while LED lights emit conspicuous, multi-color signals to help users clearly identify the current status at a quick glance.

#### Tactile Feedback Option

Beeping sounds are considered disruptive in certain circumstances. Vibration is available as an option on this imager to provide tactile feedback to users. This is ideal for both quiet and noisy environments.



## FUZZYSCAN DNA

### Value Beyond Measure

FuzzyScan DNA is a collection of unique features that come with every Cino imagers at no additional cost. It delivers exceptional value beyond barcode scanning. Aside from the exclusive FuzzyScan imaging technology, Cino's scanners provide the following distinctive features to elevate user's experience:

#### DataWizard Premium

DataWizard Premium is a unique feature to perform advanced data formatting and complex data processing.

#### iCode

The iCode feature is a macro command barcode that allows one-step configuration with a single scan.

#### Multilingual Edge

Multilingual Edge is a useful feature that enables data output in your desired language.

#### Smart Scene

Smart Scene offers a choice of several preset configurations for various application scenarios to achieve optimal scanning performance.

#### Security Plus

Security Plus is a user-defined security mechanism that prevents the access of unauthorized barcode scanners.

#### FuzzyScan Enabling Solution

FuzzyScan Enabling Solution is a suite of software utilities that enables easy integration, management, and deployment of scanners.

# SPECIFICATIONS

## Performance Characteristics

Optical System	High performance linear imaging engine
Print Contrast	15% minimum reflective difference
Light Source	630nm red LED
Minimum Resolution	3 mil (Code 39, PCS 0.9)
Reading Range *1	13 mil (0.33mm) UPC/EAN up to 24"
Scan Rate	Dynamic scanning rate up to 500 scans per second
Reading Direction	Bi-directional (forward and backward)
Pitch / Skew / Tilt	±65° / ± 65° / ± 55°
Configuration Setup	Command barcodes FuzzyScan iCode FuzzyScan PowerTool
Data Processing	DataWizard Premium
User Interfaces	Blue link indicator and 2-color status indicator Programmable beeper Optional vibration

## Electrical Characteristics

Operating Voltage	5VDC ± 10%
Operating Current	Scanner with Smart Cradle Charging: Maximum 785 mA Standby: Maximum 53 mA

## Power

Li-Ion Battery	2550 mAh capacity 3-4 hour charge time over PSU 9-10 hour charge time over USB Scan-ready at 30% power: 3 hr charge over USB
UltraCap™ Capacitor	750 Farads Less than 50 minute charge time over PSU Less than 60 minute charge time over USB Over 5 hours of use per full charge Over 17,500 scans per full charge Over 700 scans after one minute charge

## Communication Characteristics

RF Standard	Bluetooth Version 4.x
RF Frequency Band	2.402 ~ 2.4830 GHz unlicensed ISM band
Radio Link Modes	PAIR, PICO, SPP, HID
Communication Range	Up to 100 meters in open space when working with Smart Cradle, line of sight
Supported Profiles	HID (Keyboard), SPP (Serial Port)

## Physical Characteristics

Dimensions	97.0 mm (L) x 65.0 mm (W) x 156 mm (D) 3.81 in. (L) x 2.55 in. (W) x 6.14 in. (D)
Weight	198g (With Battery) 176g (With UltraCap™)
Color	Classic Black, Ivory White

## Supported Symbolologies

1D Linear Codes	Code 39, Code 39 Full ASCII, Code 32, Code 128, GS1-128, Codabar, Code 11, Code 93, GS1 DataBar, Standard & Industrial 2 of 5, Interleaved & Matrix 2 of 5, IATA, UPC/EAN/JAN, UPC/EAN/JAN with Addendum, Telepen, MSI/Plessey & UK/Plessey
Linear-stacked*2	PDF417, Micro PDF417, Composite Codes, Codablock F, Code 16K, Code 49, Linear-stacked
Postal Barcodes	German Post, Korean Post, China Post

## User Environment

Drop Specifications	Withstands multiple drops from 1.8m (6.0ft) to concrete
Environmental Sealing	IP52
Operating Temperature	-10 °C to 50 °C (14 °F to 122 °F)
Storage Temperature	-40 °C to 70 °C (-40 °F to 158 °F)
Humidity	0% to 95% relative humidity, non-condensing
Ambient Light Immunity	0 ~ 100,000 Lux
ESD Protection	Functional after 15kV discharge

## Safety & Regulatory

EMC & Radio	CE, UKCA, FCC, BSMI, RCM, KC, NCC, VCCI, MIC, SRRC
Safety	LED Eye Safety IEC62471, Exempt Group
Environmental	Compliant with RoHS and REACH

## Accessories

<b>Smart Cradle</b> RF Standard Host Interfaces	HB2112 Smart Cradle Bluetooth Version 4.x USB HID (USB Keyboard) USB VCOM (USB COM port emulation) USB OEM POS Standard RS232
<b>Cables</b>	RS232 Serial cable USB-A Cable USB-C Cable USB Power Cable
<b>Others</b>	UC2210 UltraCap™ (750 Farads) BT2100 Battery Pack (2,550mAh) US100 SmartStand Power Supply Unit (5VDC, 2A outlet)

1. The Reading Range are measured under Cino's test environmental condition.
2. Codablock F, Code 16K, and Code 49 are available upon request.

