

FUZZYSCAN F560

1D Handheld Imager



A lightweight, ergonomic imager that delivers speed and performance

Powered by FuzzyScan imaging technology, the F560 easily captures a variety of 1D and stacked barcodes, whether they appear on paper, plastic or digital screens. It is light in weight and ergonomically designed, offering users a high-level comfort all shift long. Move your business efficiency towards the right direction with Cino's F560.

- Supports PDF417 and Composite Codes
- Reads various challenging and problematic barcodes
- Reads electronic barcodes from smartphone screens
- Withstands drops from 1.6m to concrete
- Clear audio and visual feedback
- Optional vibrator for tactile confirmations
- Configuration can be done through iCode
- Advanced data formatting with DataWizard
- System security development using DataWizard

Scan All Your Needs

Tackle Stacked Symbolologies

F560 is designed to scan a vast array of 1D and stacked symbolologies, whether displayed on paper, plastic or electronically. Stacked-linear barcodes that can be read by the scanner include PDF417, GS1 Databar Stacked, and composite codes.

Ready for Challenges

Empowered by the FuzzyScan imaging platform, this scanner is primed to read various challenging and problematic barcodes. For example, poor quality, distorted, dirty, damaged, and overwrapped barcodes, as well as electronic barcodes on dimly-lit displays.

One Tool for Different Jobs

F560 delivers superior readings on high-density barcodes, in addition to exceptional scan range on regular barcodes. Its performance and capabilities make it a versatile scanner that is well-suited for diverse applications.

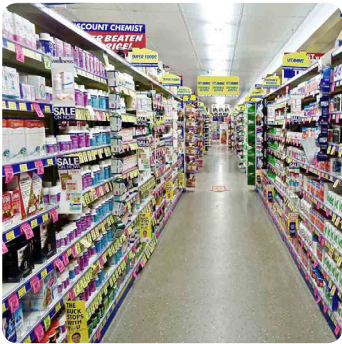
Enhanced User Experience

Sharp Aimer for Rapid Targeting

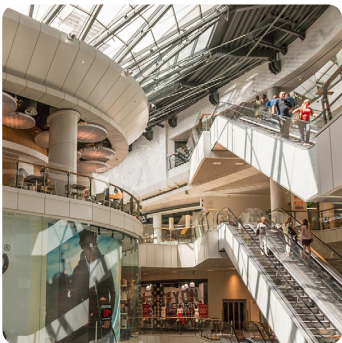
The scanner's sharp LED beam helps users aim faster and with greater accuracy. F560 also projects a bright red illumination that allows for rapid barcode captures, even under low ambient lighting.

Clear Audio and Visual Feedbacks

This barcode scanner contains a programmable beeper with adjustable sound volume. Its LED lights provide conspicuous, multi-color indications. Along with the optional vibrator, these sensory feedbacks work in concert to promote a greater scanning experience.



Retail



Commercial



Hospitality

Optional Vibrator for Quiet or Noisy Environments

An optional vibrator is available, offering tactile confirmation of good reads. It is ideal for places where the scanner's beeps might be disruptive, such as a library or in hospital rooms where patients are resting. Vibrations may also be preferable in environments where beeping sounds may be drowned out by loud noises, e.g. manufacturing plant.

Stylish, Ergonomic and Durable

F560 merges style and ergonomics without compromising performance. The handle provides a natural grip that minimizes user fatigue during repetitive tasks. Its smooth outline is aesthetically pleasing and sure to complement professional decors. Furthermore, this imager's solid housing allows it to withstand 1.6-meter drops to concrete, offering a high degree of protection.

Value Beyond Measure

FuzzyScan DNA is a collection of unique features that come with every Cino imagers at no additional cost. It delivers exceptional value beyond barcode scanning. Aside from the exclusive FuzzyScan imaging technology, Cino's scanners provide the following distinctive features to elevate user's experience:

DataWizard

DataWizard is a unique feature to perform advanced data formatting and complex data processing.

iCode

The iCode feature is a macro command barcode that allows one-step configuration with a single scan.

Multilingual Edge

Multilingual Edge is a useful feature that enables data output in your desired language.

Smart Scene

Smart Scene offers a choice of several preset configurations for various application scenarios to achieve optimal scanning performance.

Security Plus

Security Plus is a user-defined security mechanism that prevents the access of unauthorized barcode scanners.

FuzzyScan Enabling Solution

FuzzyScan Enabling Solution is a suite of software utilities that enables easy integration, management, and deployment of scanners.

SPECIFICATIONS

Performance Characteristics

Optical System	High performance linear imaging engine
Print Contrast	20% minimum reflective difference
Light Source	630nm LED
Minimum Resolution	3 mil (Code 39, PCS 0.9)
Reading Range *1	13 mil (0.33mm) UPC/EAN More than 13" 20 mil (0.5mm) Code 39 up to 18"
Scan Rate	Dynamic scanning rate up to 500 scans per second
Reading Direction	Bi-directional (forward and backward)
Pitch / Skew / Tilt	±65° / ±65° / ±55°
Host Interfaces	USB HID (USB Keyboard) USB VCOM (USB COM port emulation) Standard RS232
Configuration Setup	Command barcodes iCode FuzzyScan PowerTool
Data Editing	DataWizard

Physical Characteristics

Dimensions	165.0 mm (L) x 64.7 mm (W) x 38.7 mm (D) 6.50 in. (L) x 2.55 in. (W) x 1.52 in. (D)
Weight	106g (cable excluded)
Color	Classic Black, Ivory White
User Interfaces	Blue LED indications Programmable beeper Optional vibrator
Operating Voltage	5VDC ± 10%
Operating Current	Operating : Typical 170 mA @5VDC Standby : Typical 75 mA @5VDC

1. The Reading Range are measured under Cino's test environmental condition.
2. Don't stare into the LED beam.

Supported Symbolologies

1D Linear Codes	Code 39, Code 39 Full ASCII, Code 32, Code 39 Trioptic Code 128, GS1-128, Codabar, Code 11, Code 93 Standard & Industrial 2 of 5, Interleaved & Matrix 2 of 5 German Postal Code, China Postal Code, IATA UPC/EAN/JAN, UPC/EAN/JAN with Addendum Telepen, MSI/Plessey & UK/Plessey GS1 DataBar (formerly RSS) Linear & Linear Stacked
Linear-stacked	PDF417, Micro PDF417, Codablock F, Composite
Postal Barcodes	German Post, Korean Post, China Post

User Environment

Drop Specifications	Withstand multiple 1.6m/5.2ft. drops to concrete
Environmental Sealing	IP41
Operating Temperature	-10 °C to 50 °C (14 °F to 122 °F)
Storage Temperature	-40 °C to 70 °C (-40 °F to 158 °F)
Humidity	5% to 95% relative humidity, non-condensing
Ambient Light Immunity	0 ~ 80,000 lux
ESD Protection	Functional after 15KV discharge

Safety & Regulatory

EMC	CE, FCC, BSMI, RCM, KC, VCCI
Safety *2	LED Eye Safety IEC62471, Exempt Group
Environmental	Compliant with RoHS directive

Accessories

Cables	RS232 Serial Cable USB-A Cable USB-C Cable USB Power Cable
Others	5VDC Power Supply Unit US100 SmartStand US50 Hands-free Stand Universal Holder

