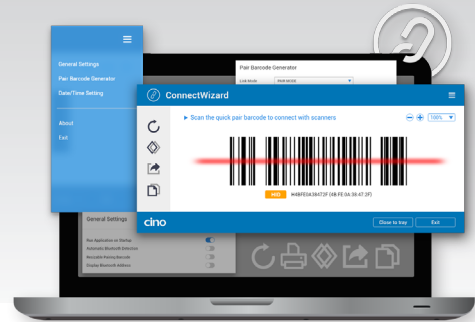


ConnectWizard

Make the Bluetooth Pairing as Easy as Pie



One-Step Pairing to Streamline Workflows

ConnectWizard is able to detect Bluetooth address automatically and generate a pairing barcode. It enables swift pairing in one step, providing a convenient solution for pairing your Cino cordless scanners with Bluetooth-enabled hosts. With ConnectWizard, you can enjoy streamlined workflows and hassle-free pairing experience.

- Automatically generate a pairing barcode on the host's screen
- Support Windows OS and macOS hosts
- Export the pairing barcode in JPG or PDF format
- Display linked Cino scanners
- Create pairing barcodes for Cino Smart Cradle

Automatic Bluetooth Detection

ConnectWizard can automatically detect the Bluetooth address of a remote host and rapidly generate a pairing barcode. It's compatible with Windows and macOS hosts.

One-Step Pairing

Simply scan the pairing barcode displayed on the host's screen with your scanner, then the pairing process will automatically initiate. This allows a simple and effortless pairing experience.

Full Control at Your Fingertips

ConnectWizard also helps optimize operations through scanner monitoring and tracking. Every Cino scanner that is paired with a remote host can be listed, providing an easy oversight for your scanners.

Pairing on Demand

The pairing barcodes generated by ConnectWizard can be conveniently exported in either JPG or PDF format for future use, eliminating the need to run ConnectWizard again. This provides added flexibility and ease of access.