

Cino FuzzyScan Scanners F/W Upgrade Procedure (Rev. B1)

April 19, 2011

Contents of this document

This document contains the following subjects:

- * System requirements
- * Upgrade Utility
- * Available Models
- * How to make F/W upgrade for corded scanner
- * How to make F/W upgrade for Bluetooth scanner and smart cradle

System requirements

One of the following operating systems must be fully installed and running on the system before installing this driver:

- Windows 7, 32-bit
- Windows 2000 SP4
- Windows XP SP3, SP4
- Windows Vista

Upgrade Utility

FuzzyScan POWERTOOL


Available Models

- *Corded Scanner
 - F400 Series: F430, F460, F468
 - F600 Series: F660, F680, F688
 - L600 Series: L680, L688
 - F700 Series: F760, F765, F780, F788
 - L700 Series: L780, L788

- *Cordless Scanner
 - F600 Series: F680BT, F688BT
 - L600 Series: L680BT, L688BT
 - F700 Series: F780BT, F788BT
 - L700 Series: L780BT, L788BT
 - Smart Cradle: HB2110

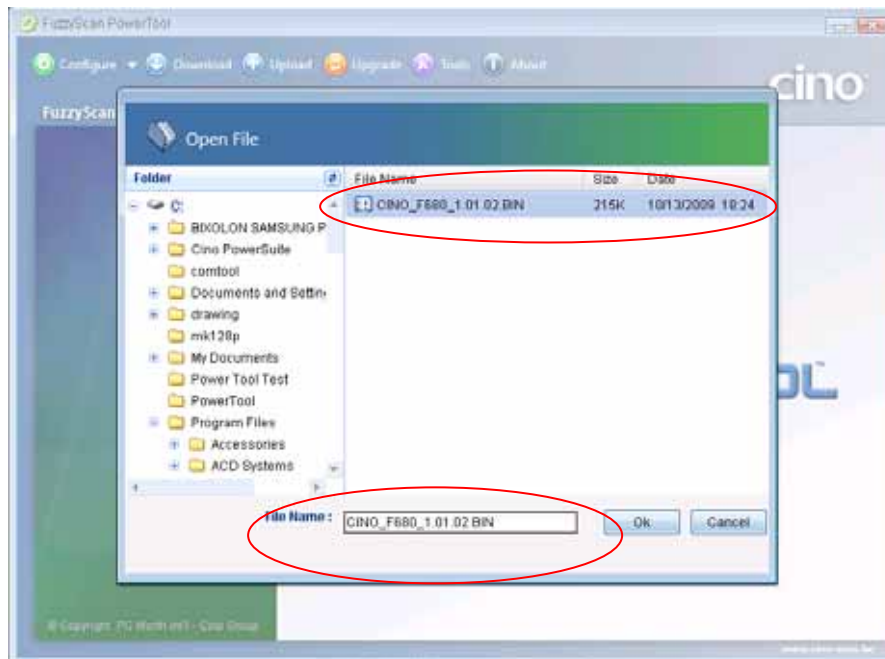
- *Scan Engine
 - SE380 Series: F380-0, F380-1, F380-2, F380-3
 - SE388 Series: F388-0, F388-1, F388-2, F388-3

How to make F/W upgrade for corded scanner

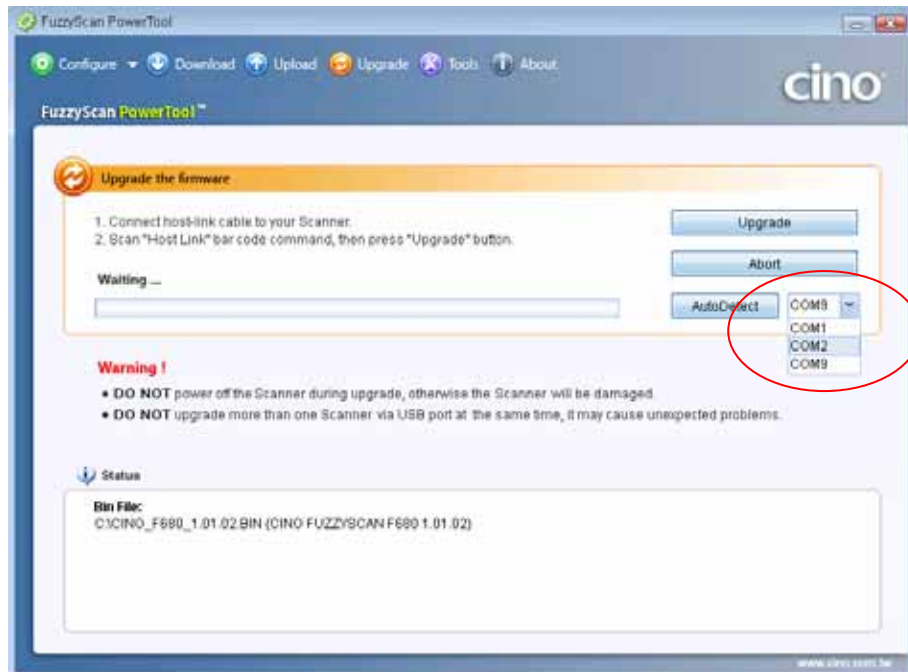
1. Ensure FuzzyScan PowerTool has been installed.
2. Double click the shortcut of  (Launch FuzzyScan PowerTool 2.0) on the desktop to open the FuzzyScan PowerTool.
3. Connect the RS232 or USB cable to the host device and scanner.
4. Connect the power supply unit or power steal cable to the power jack of RS232 cable .
5. Click "**Upgrade**" on "**FuzzyScan PowerTool 2.0**".



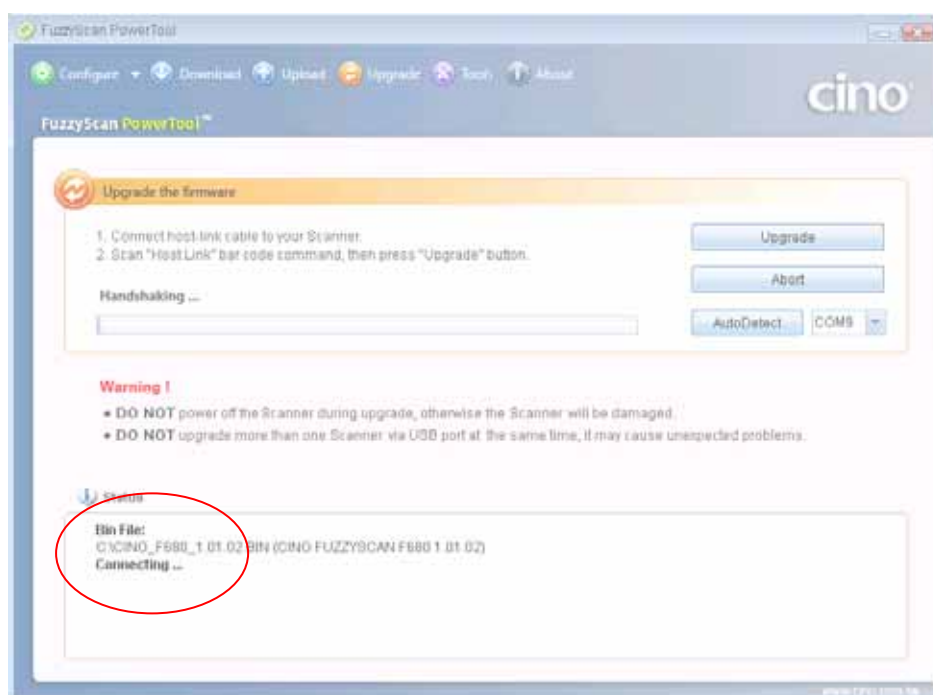
6. Select the proper F/W to proceed F/W upgrade, then click "Ok".



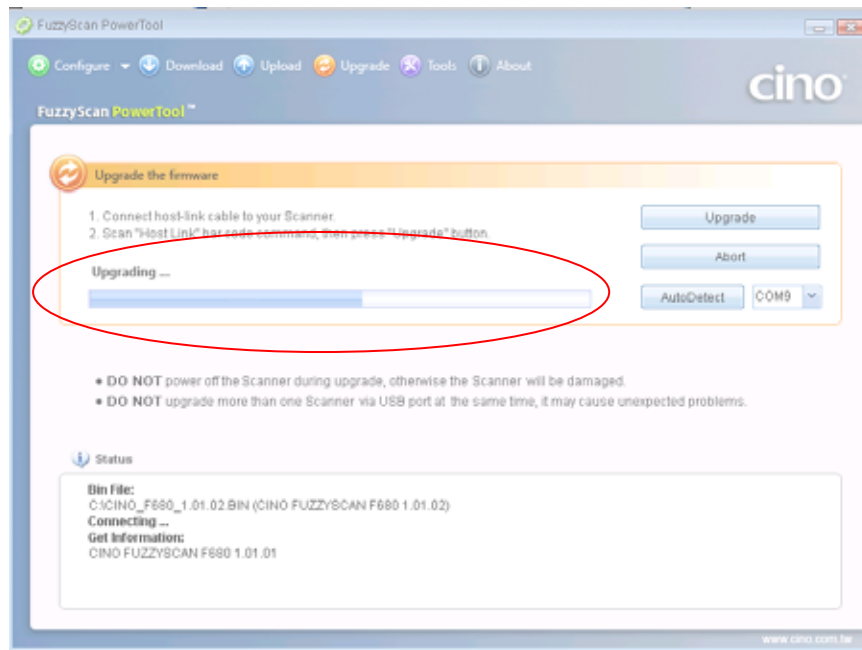
7. Scan " **RS232 Serial** " or " **USB Com Port Emulation** " quick set command.
8. Scan " **PowerTool Host Link** " quick set command. When you hear four beeps, it indicates the scanner is in host link mode.
9. Use the COM Port drop down list to select the COM Port you want to use (you can go to Windows Device manager – COM & LPT to check the CINO COM Port no. when you use USB cable) or click "Auto Detect".



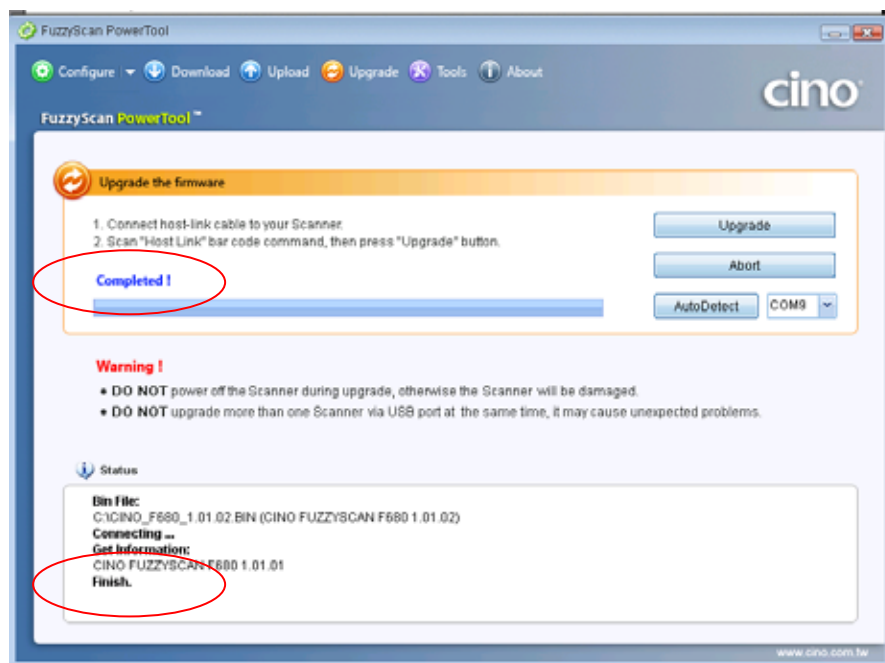
10. Click "Upgrade" to start upgrade process. You will see "Connecting..." showing on PowerTool. The status indicator of scanner will flash green.



11. You will hear short click beeps during upgrade process and the status indicator of scanner will turn steady red. You can check the upgrade process from the blue bar indicated below.




12. When you hear 4 beeps, it means the upgrade process is completed successfully. The status indicator of scanner will give alternative green and red blinks. You will see "Completed" and "Finish" showing on PowerTool to indicate the success of F/W upgrade.



How to make F/W upgrade for Bluetooth scanner and smart cradle

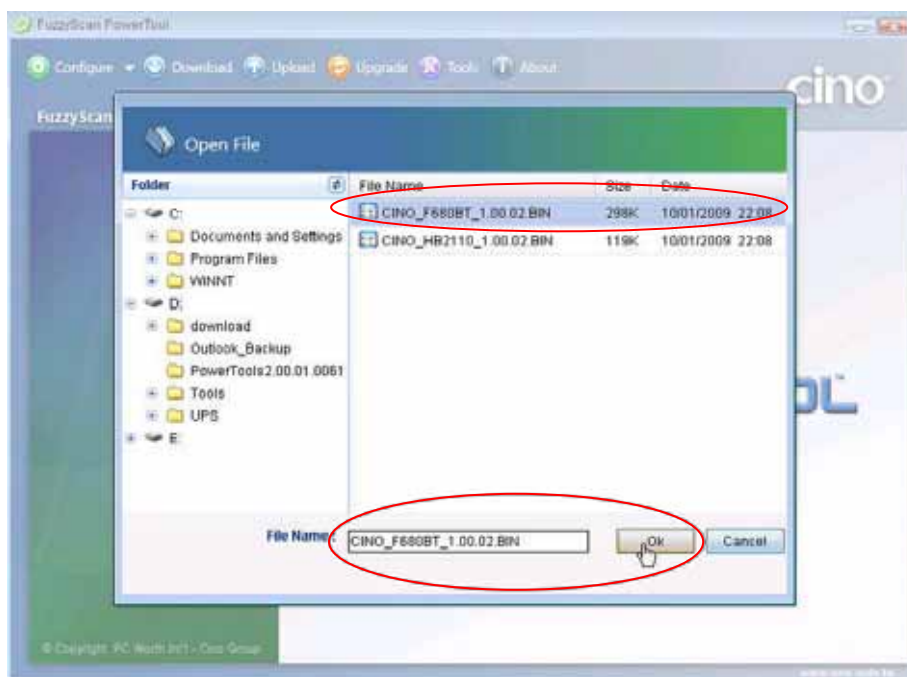
A. Bluetooth Scanner

a. upgrade F/W through Smart Cradle

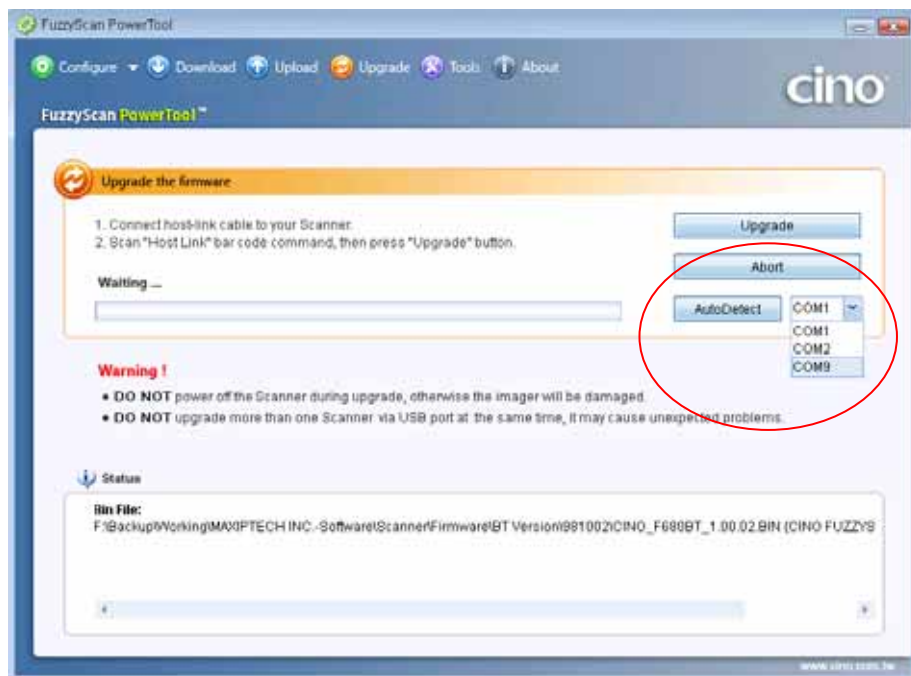
1. Ensure FuzzyScan PowerTool has been installed.
2. Double click the shortcut of  (Launch FuzzyScan PowerTool 2.0) on the desktop to open the FuzzyScan PowerTool.
3. Connect the RS232 or USB cable to the host device and smart cradle.
4. Connect the power supply unit to the smart cradle.
5. Ensure the scanner and smart cradle are in "Uninstall" state.
6. Click "**Upgrade**" on "**FuzzyScan PowerTool 2.0**".



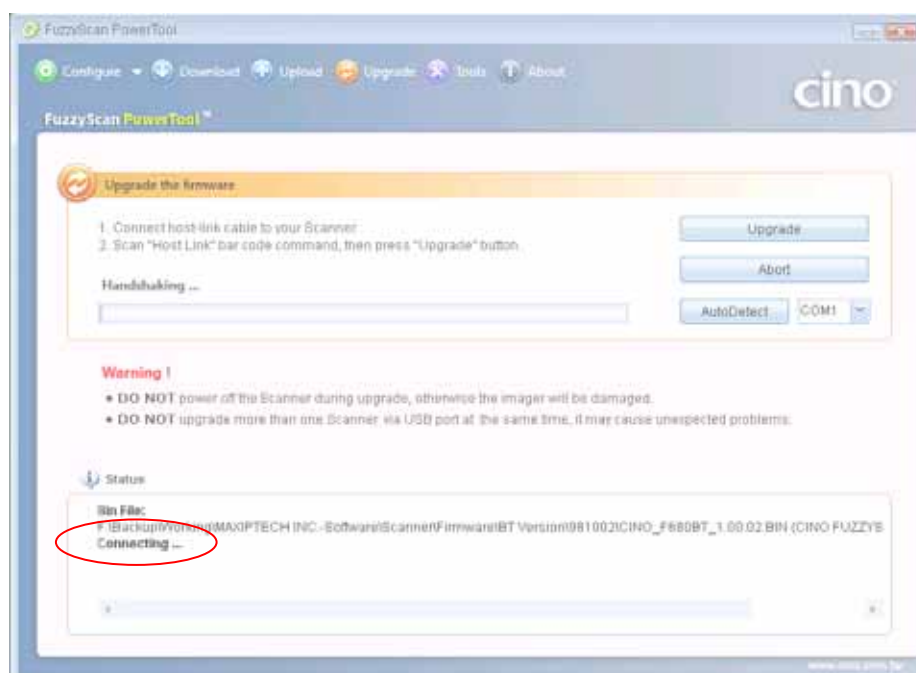
7. Select the proper F/W to proceed F/W upgrade, then click "Ok".



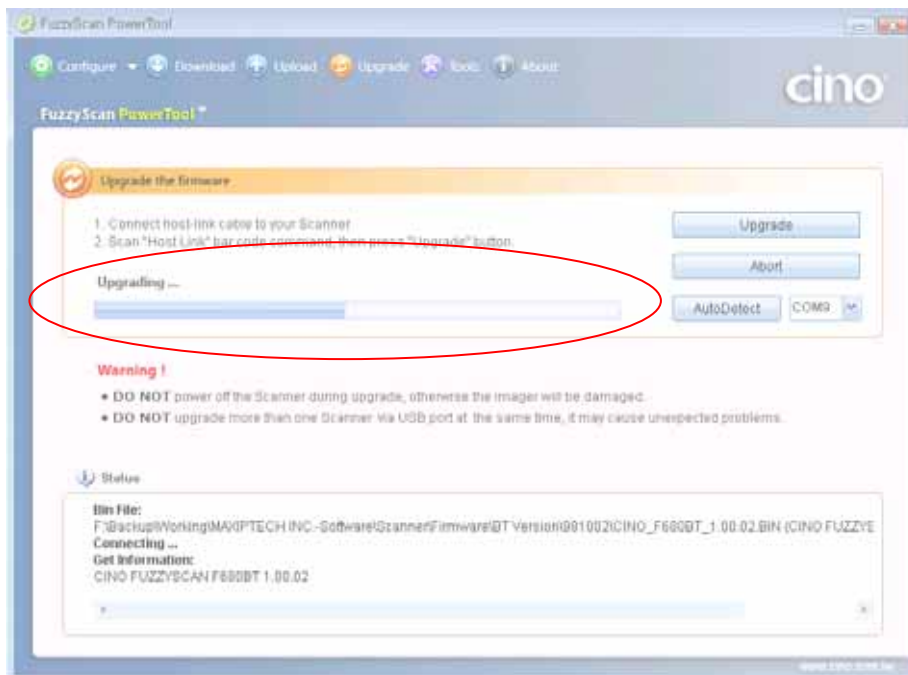
8. Scan " **RS232 Serial** " or " **USB Com Port Emulation** " quick set command.
9. Scan "**PowerTool Host Link**" quick set command, then put the scanner onto the smart cradle. When you hear four beeps, it indicates the scanner is in host link mode.
10. Use the COM Port drop down list to select the COM Port you want to use (you can go to Windows Device manager – COM & LPT to check the CINO COM Port no. when you use USB cable) or click "Auto Detect".



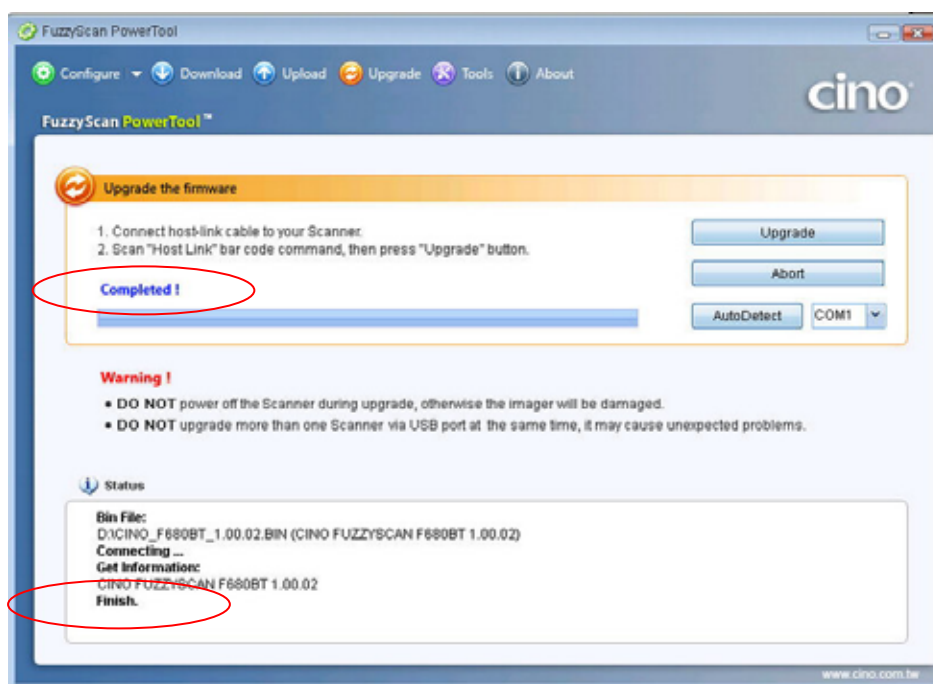
11. Click "Upgrade" to start upgrade process. You will see "Connecting..." showing on PowerTool. The status indicator of scanner will flash alternative green and red blinks and give short beeps.




12. You will hear short click beeps during upgrade process and the status indicator of scanner will turn steady red. You can check the upgrade process from the blue bar indicated below.



13. When you hear 4 beeps, it means the upgrade process is completed successfully. The status indicator of scanner will give alternative green and red blinks. You will see "Completed" and "Finish" showing on PowerTool to indicate the success of F/W upgrade.

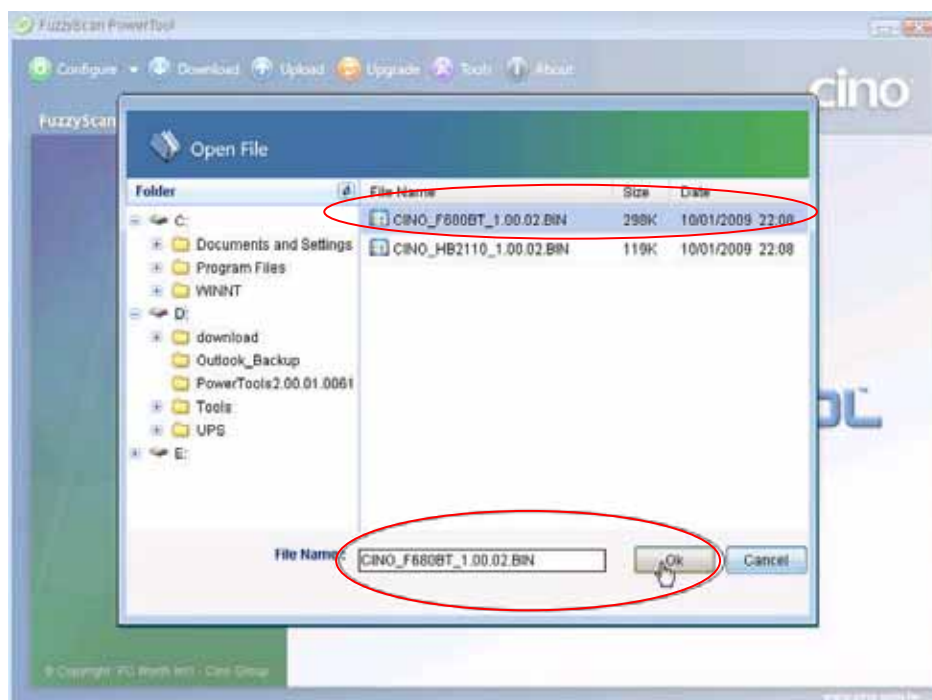


b. upgrade F/W through Charging Cradle

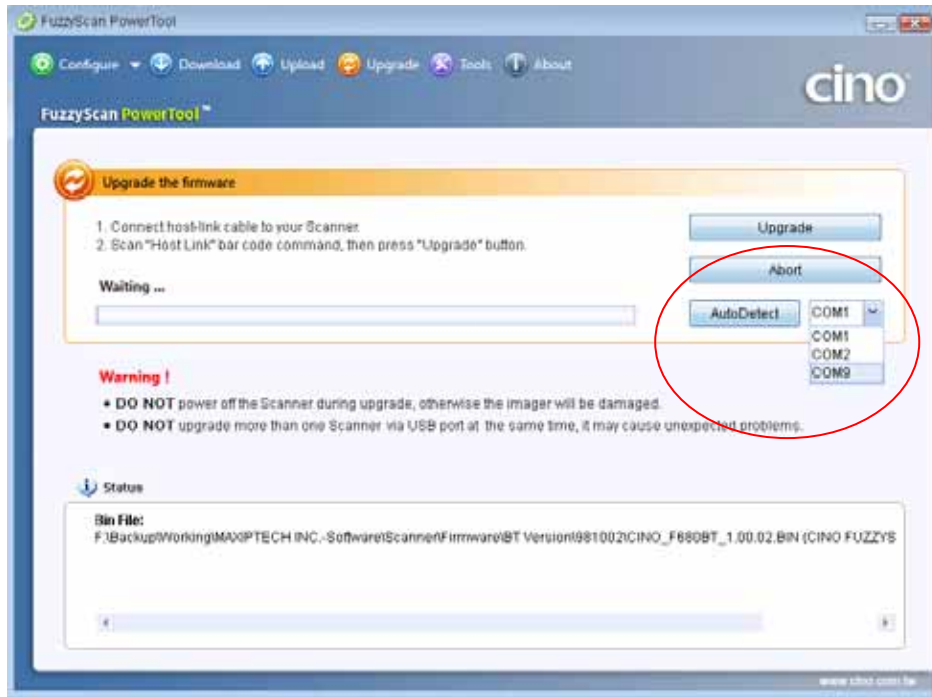
1. Ensure FuzzyScan PowerTool has been installed.
2. Double click the shortcut of  (Launch FuzzyScan Power Tool 2.0) on the desktop to open the FuzzyScan PowerTool.
3. Connect the USB cable to the host device and the charging cradle.
4. Connect the power supply kit to the charging cradle.
5. Ensure the scanner is in "Uninstall" state.
6. Click "**Upgrade**" on "**FuzzyScan PowerTool 2.0**".



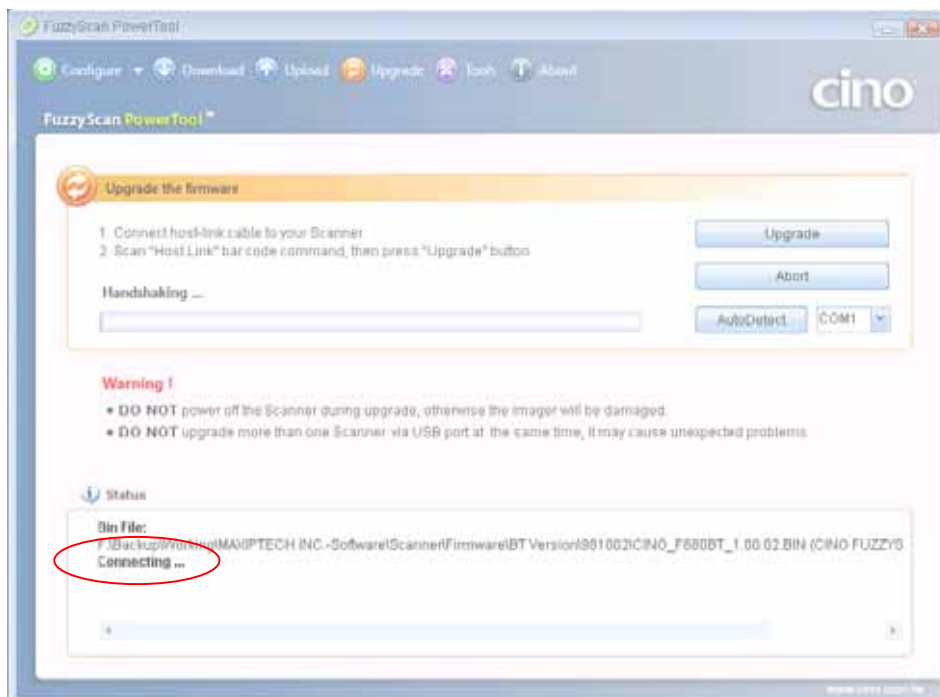
7. Select the proper F/W to proceed F/W upgrade, then click "Ok".



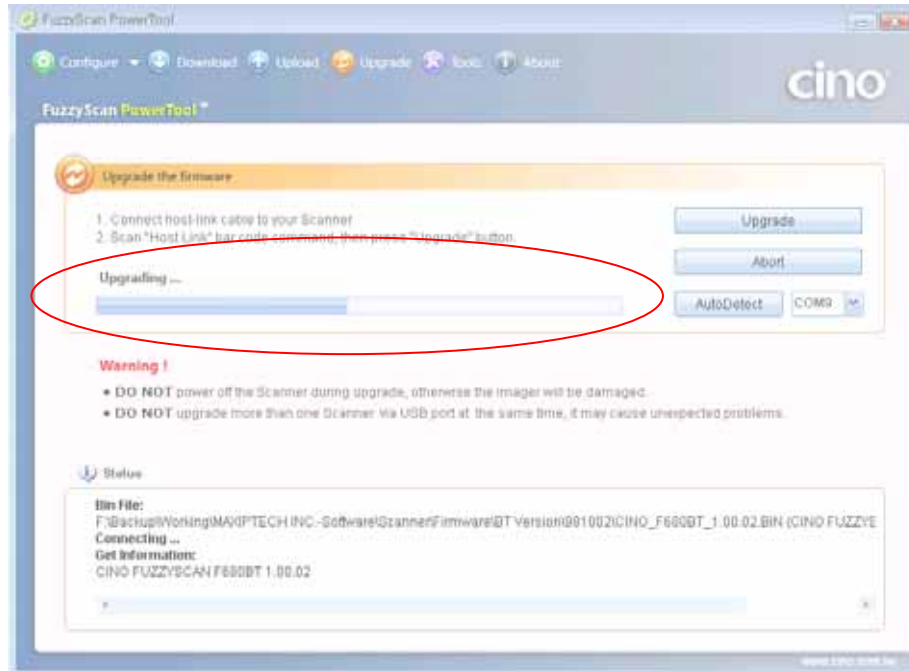
8. Scan " **USB Com Port Emulation** " quick set command first.
9. Scan "**PowerTool Host Link**" quick set command, then put the scanner onto the charging cradle. When you hear four beeps, it indicates the scanner is in host link mode.
10. Use the COM Port drop down list to select the COM Port you want to use (you can go to Windows Device manager – COM & LPT to check the CINO COM Port no.) or click "Auto Detect".



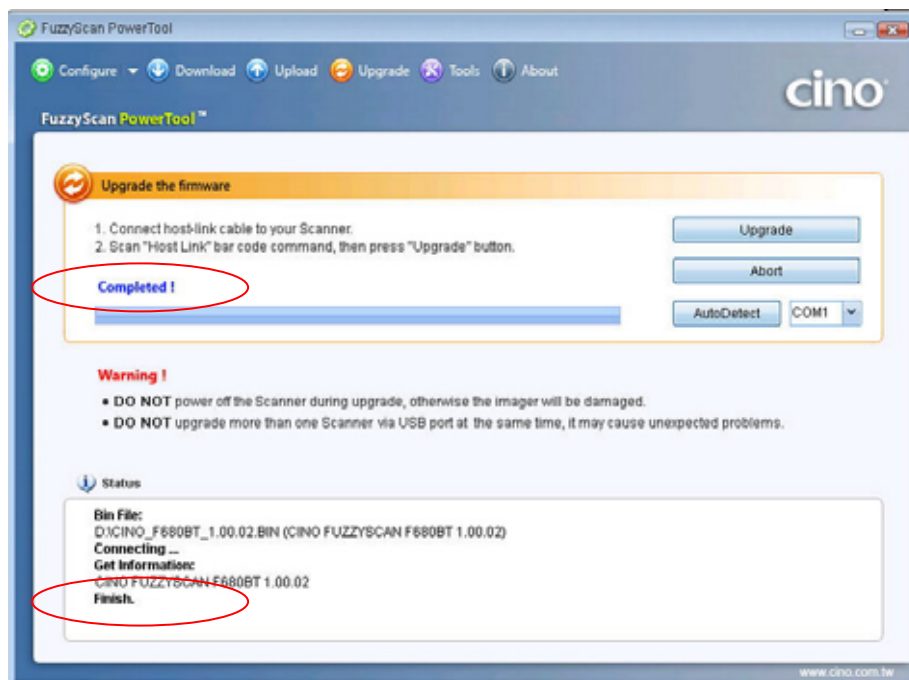
11. Click "Upgrade" to start upgrade process. You will see "Connecting..." showing on PowerTool. The status indicator of scanner will flash alternative green and red blinks and give short beeps.



12. You will hear short click beeps during upgrade process and the status indicator of scanner will turn steady red. You can check the upgrade process from the blue bar indicated below.




13. When you hear 4 beeps, it means the upgrade process is completed successfully. The status indicator of scanner will give alternative green and red blinks. You will see "Completed" and "Finish" showing on PowerTool to indicate the success of F/W upgrade.



B. Smart Cradle

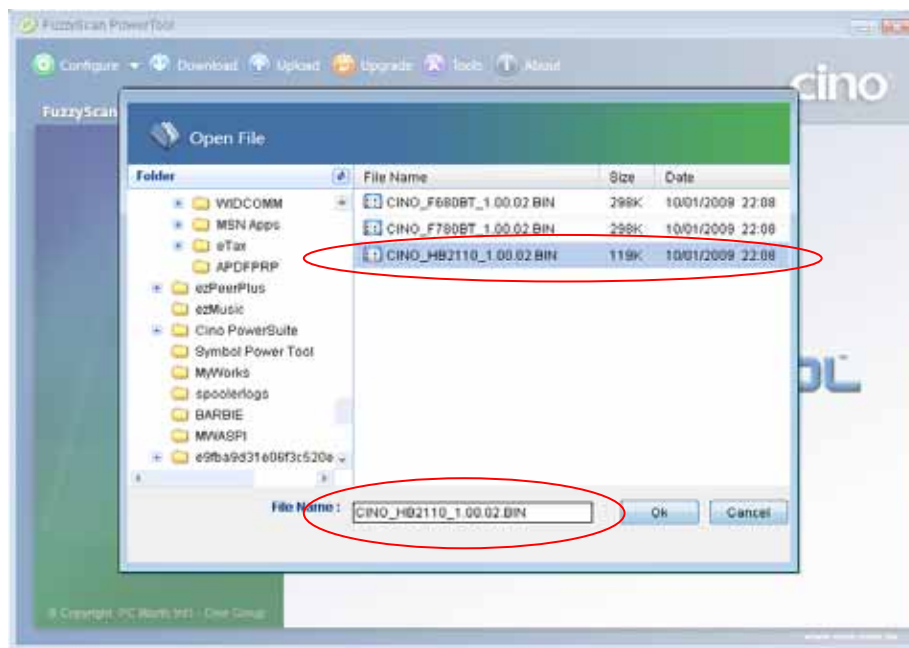
Smart Cradle **without** USB Bus Power Switch



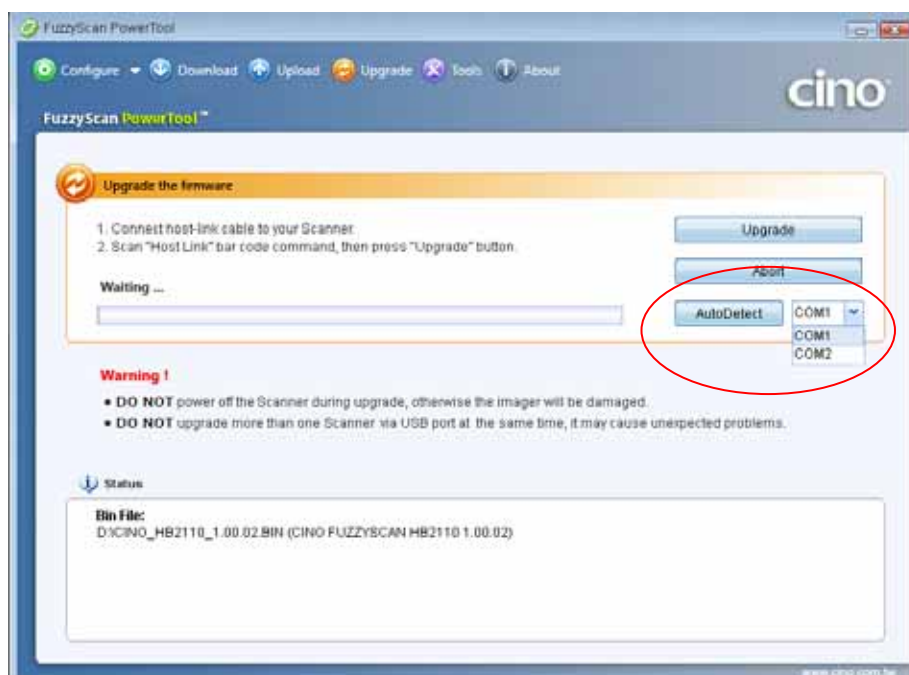
1. Ensure FuzzyScan PowerTool has been installed.
2. Double click the shortcut of  (Launch FuzzyScan Power Tool 2.0) on the desktop to open the FuzzyScan PowerTool.
3. Plug the AC power plug into the AC wall socket.
4. Press and hold the Paging/Reset button, then connect the RS232 or USB cable to the host device and the smart cradle. After that, plug the DC power cord of the power supply unit into the DC power jack of the smart cradle. You will see the left side indicator of the smart cradle flashing green at regular interval. Then release the Paging/Reset button.
5. Click "**Upgrade**" on "**FuzzyScan PowerTool 2.0**".



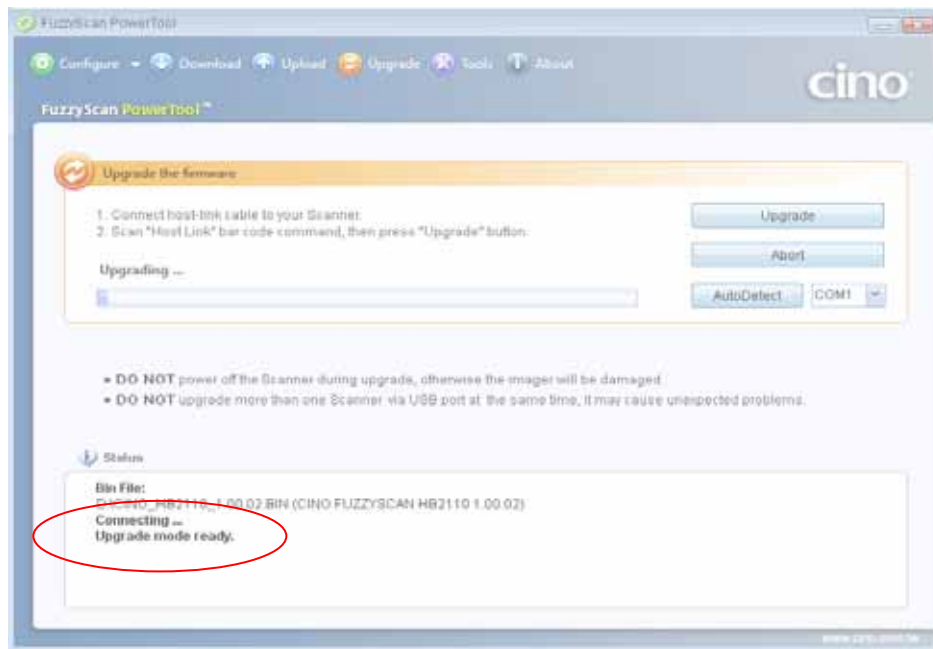
6. Select the proper F/W to proceed F/W upgrade, then click "Ok".



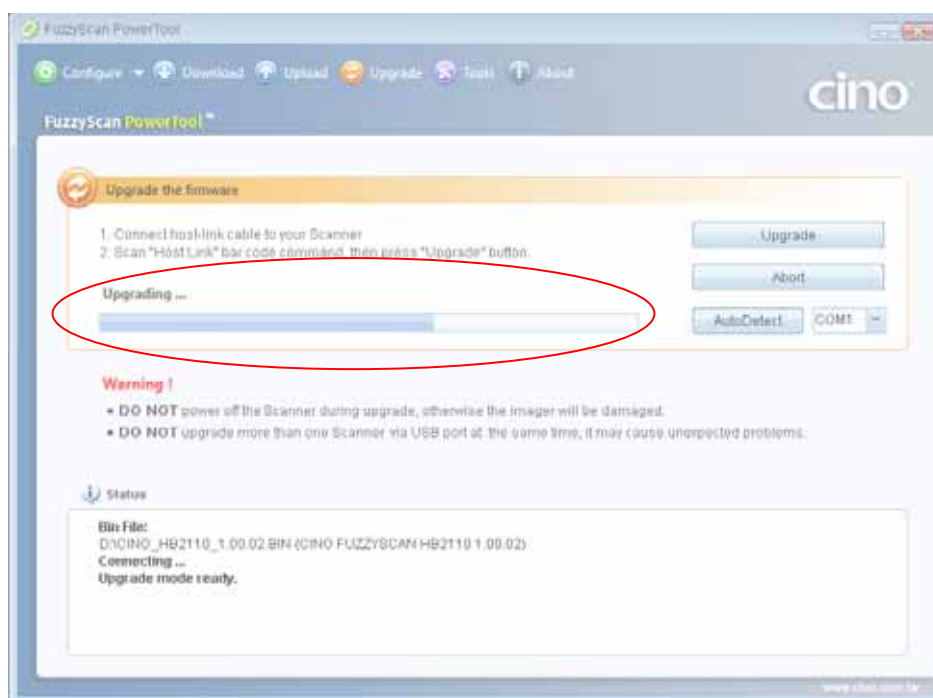
7. Use the COM Port drop down list to select the COM Port you want to use or click "Auto Detect".



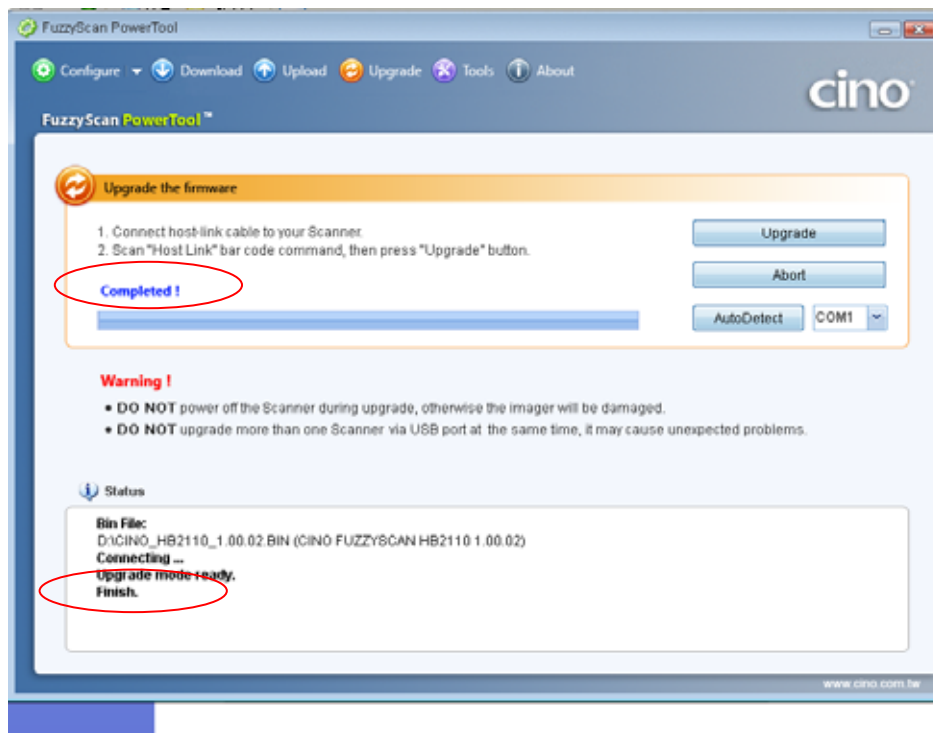
8. Click "Upgrade" to start upgrade process. You will see "Connecting...Upgrade mode ready" showing on PowerTool.



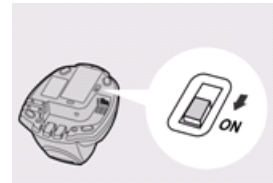
9. You will hear short click beeps during upgrade process and the side indicators of smart cradle will turn steady red. You can check the upgrade process from the blue bar indicated below.





10. You will hear 4 beeps after the upgrade process is completed successfully. The side indicators of smart cradle will give alternative green and red blinks. You will see "Completed" and "Finish" showing on PowerTool to indicate the success of F/W upgrade.



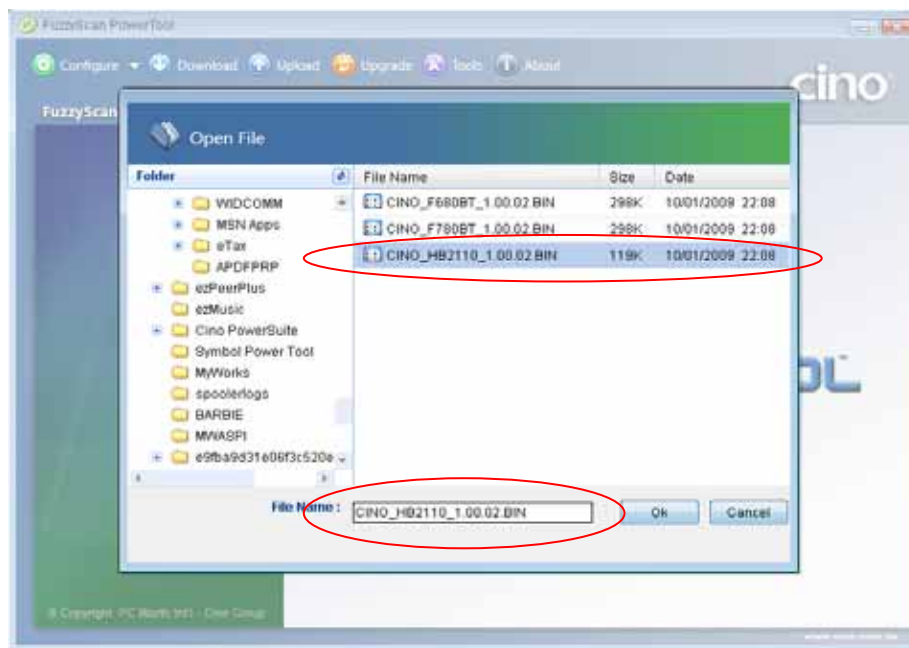
Smart Cradle **with** USB Bus Power Switch (**Switch off**)



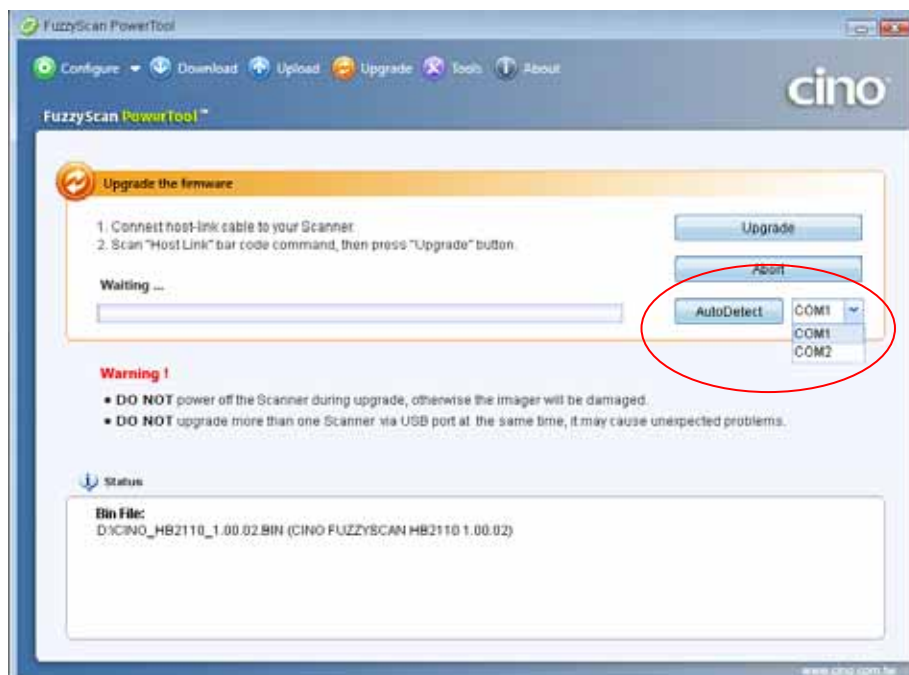
1. Ensure FuzzyScan PowerTool has been installed.
2. Double click the shortcut of  (Launch FuzzyScan Power Tool 2.0) on the desktop to open the FuzzyScan PowerTool.
3. Plug the AC power plug into the AC wall socket.
4. Press and hold the Paging/Reset button, then connect the RS232 or USB cable to the host device and the smart cradle. After that, plug the DC power cord of the power supply unit into the DC power jack of the smart cradle. You will see the left side indicator of the smart cradle flashing green at regular interval. Then release the Paging/Reset button.
 **If only USB2.0 is available in your host device, you are recommended to use power supply as power source. Keep the USB bus power switch on "OFF".**
5. Click "**Upgrade**" on "**FuzzyScan PowerTool 2.0**".



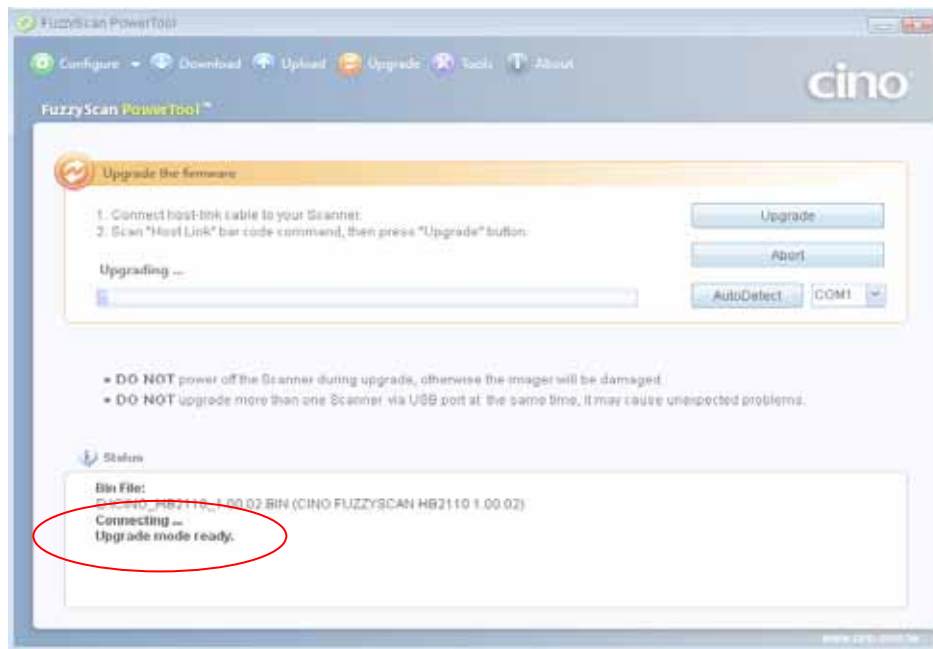
6. Select the proper F/W to proceed F/W upgrade, then click "Ok".



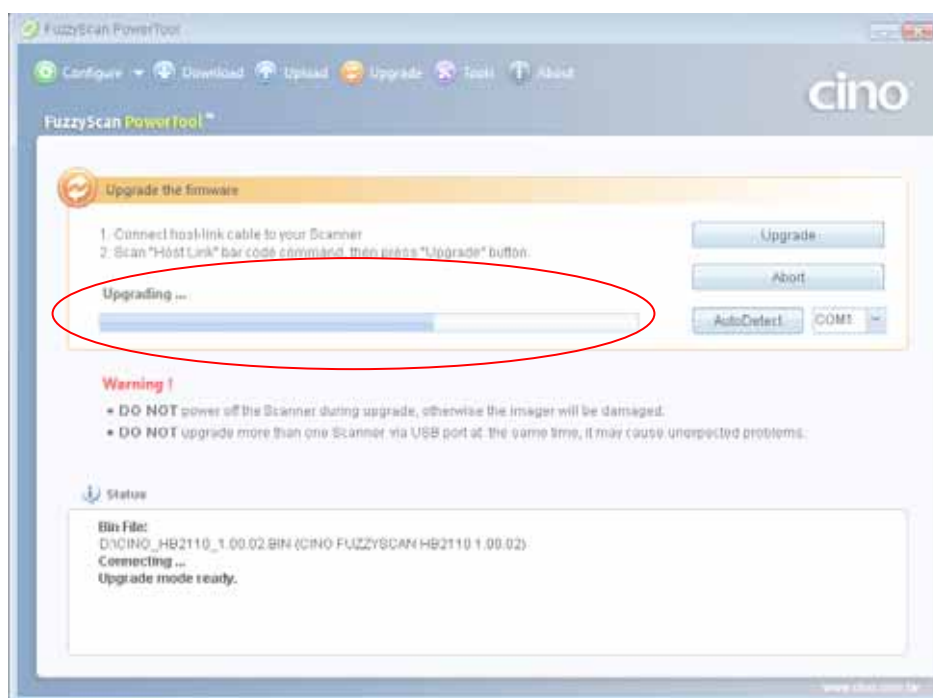
7. Use the COM Port drop down list to select the COM Port you want to use or click "Auto Detect".



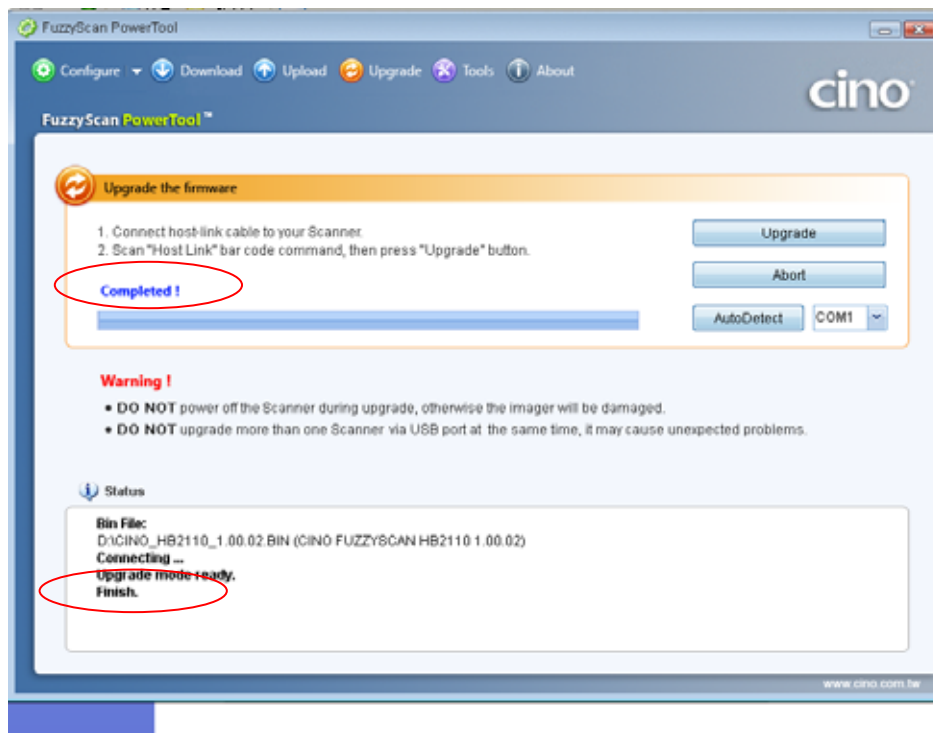
8. Click "Upgrade" to start upgrade process. You will see "Connecting...Upgrade mode ready" showing on PowerTool.



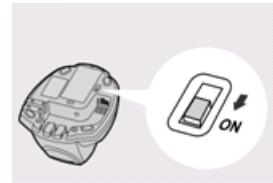
9. You will hear short click beeps during upgrade process and the side indicators of smart cradle will turn steady red. You can check the upgrade process from the blue bar indicated below.






10. You will hear 4 beeps after the upgrade process is completed successfully. The side indicators of smart cradle will give alternative green and red blinks. You will see "Completed" and "Finish" showing on PowerTool to indicate the success of F/W upgrade.



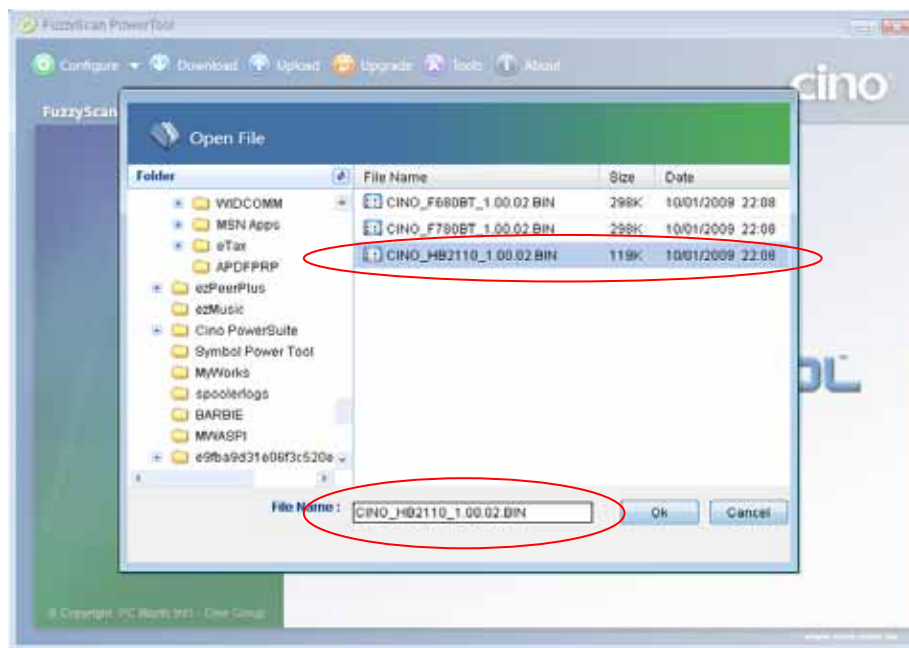
Smart Cradle **with** USB Bus Power Switch (**Switch on**)



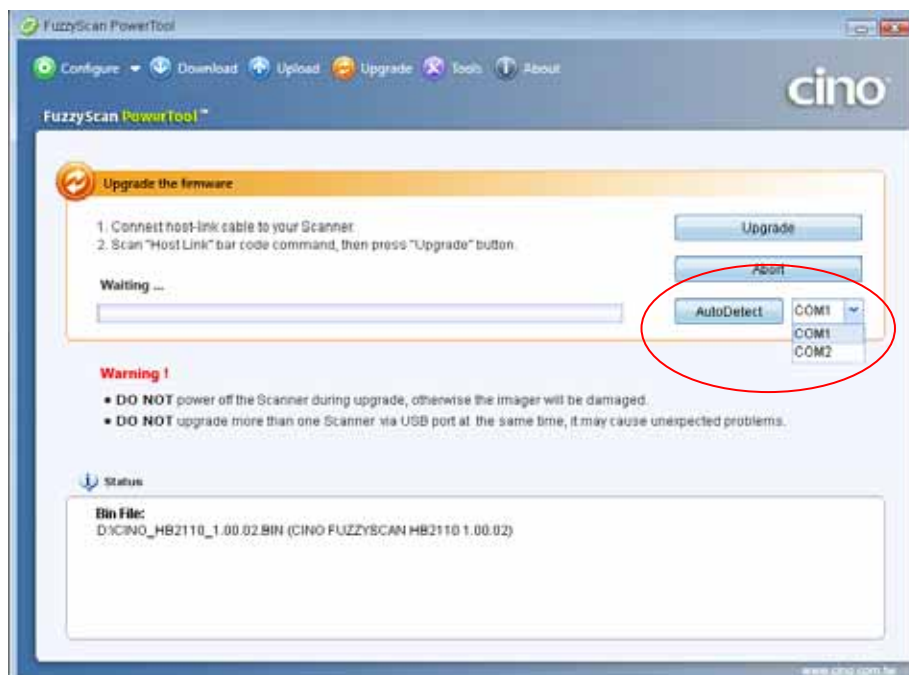
1. Ensure FuzzyScan PowerTool has been installed.
2. Double click the shortcut of  (Launch FuzzyScan Power Tool 2.0) on the desktop to open the FuzzyScan PowerTool.
 [If you use USB cable, please go to step 3.1 to continue the upgrade procedure.](#)
3. Plug the AC power plug into the AC wall socket. Press and hold the Paging/Reset button, then connect the RS232 cable to the host device and the smart cradle. After that, plug the DC power cord of the power supply unit into the DC power jack of the smart cradle. You will see the left side indicator of the smart cradle flashing green at regular interval. Then release the Paging/Reset button.
(for USB cable only)
[Press and hold the Paging/Reset button, then connect the USB cable to the host device and the smart cradle. You will see the left side indicator of the smart cradle flashing green at regular interval. Then release the Paging/Reset button.](#)
 [If USB3.0 is available in your host device, you can use USB bus power feature by sliding the switch to "ON", without having to use the external power supply.](#)
4. Click "**Upgrade**" on "**FuzzyScan PowerTool 2.0**".



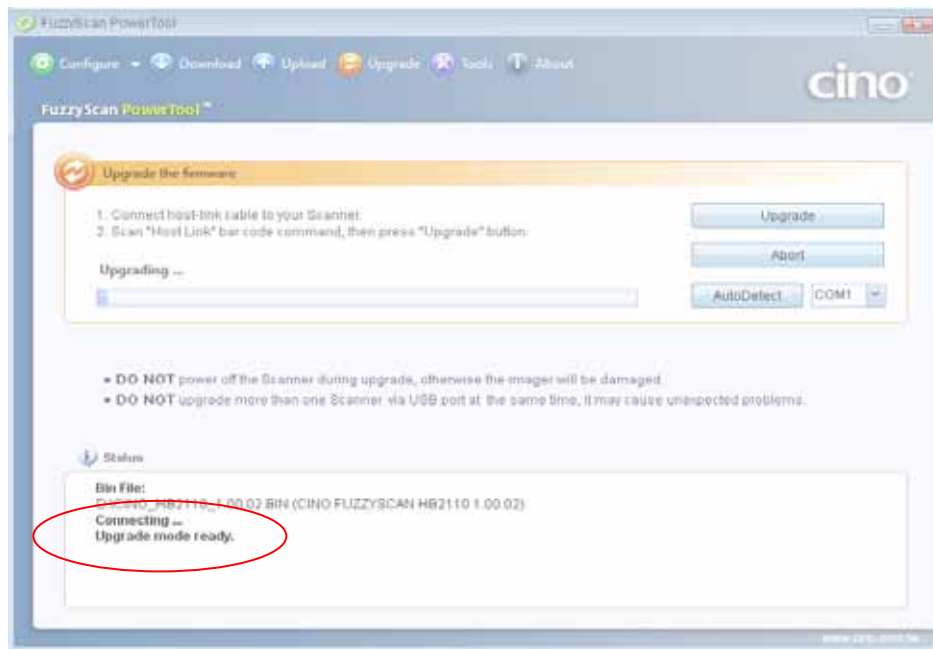
5. Select the proper F/W to proceed F/W upgrade, then click "Ok".



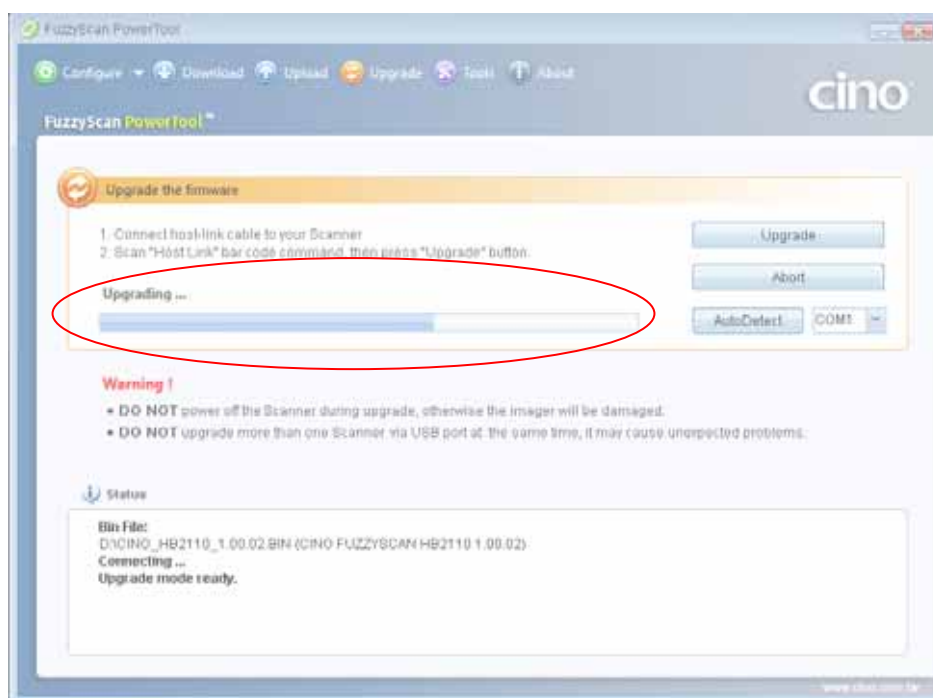
6. Use the COM Port drop down list to select the COM Port you want to use or click "Auto Detect".



7. Click "Upgrade" to start upgrade process. You will see "Connecting...Upgrade mode ready" showing on PowerTool.



8. You will hear short click beeps during upgrade process and the side indicators of smart cradle will turn steady red. You can check the upgrade process from the blue bar indicated below.



9. You will hear 4 beeps after the upgrade process is completed successfully. The side indicators of smart cradle will give alternative green and red blinks. You will see "Completed" and "Finish" showing on PowerTool to indicate the success of F/W upgrade.

